

polylac



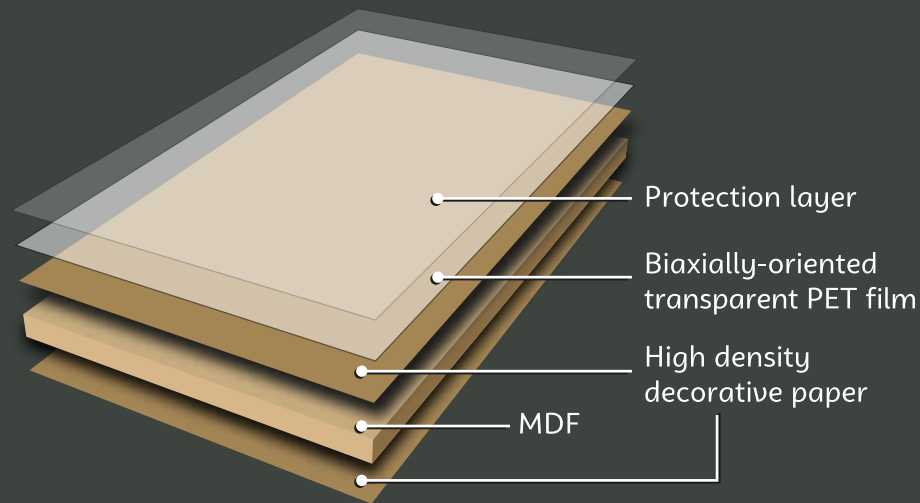
Exclusive / Ecological / Resistant

 **gizir**[®]
WOOD PRODUCTS

What is polylac ?

Polylac is an ecological multi-layered decorative panel with "excellent scratch, stain, heat, and chemical resistance"

It also has the highest gloss level with a "99GU" gloss rating. Still achieving a "3.0 Newton (class 4B)" scratch resistance rating. Six times the scratch resistance of some acrylics in the industry!



Polydac panel is made by pressing a high density decorative paper / pp to MDF. A specially developed biaxially-oriented transparent PET film is then laminated on the surface to protect it from external factors.

Why polylac ?

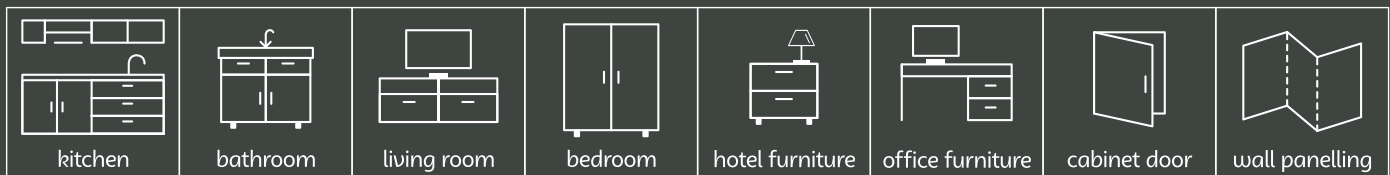
In the decorative panel industry, high gloss levels are easy to achieve, however, the higher the gloss level, the lower the scratch resistance. Polylac, through extensive testing, has proved superior levels of glossiness while maintaining a very high scratch resistance.

Polylac, due to its flexible PET film, will not crack or chip, thus making the edge banding process simple.

Polylac panels retain their original state without changing, cracking, or fading for a longer time compared to similar products in the market.

Making Polylac the ideal sustainable material for all your needs.

Where to use ?



Polylac panel dimensions (mm): 18x1220x2800 / 8x1220x2800

Matching edgebanding: Acrylic (single color / double color), ABS

Polylac



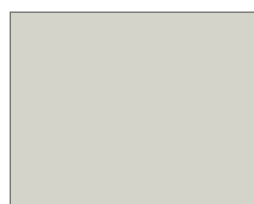
9513



9523



9525



9527



9528



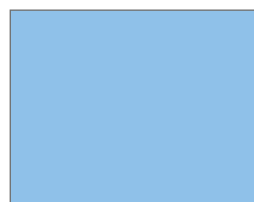
9539



9529



9534



9536



9545



9530



9570



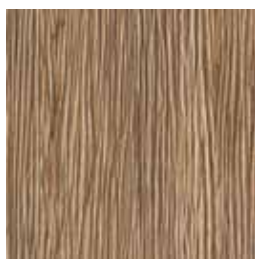
9543

Features

- ▶ High gloss with mirror like finish
- ▶ Scratch, stain & heat resistant
- ▶ Smooth surface and depth effect
- ▶ Cuts without cracking or chipping
- ▶ 100% PVC free
- ▶ Very easy to clean and maintain
- ▶ Elegant designs
- ▶ Matching acrylic and ABS edge tape
- ▶ Two-toned brushed aluminum with color edge tape

*Colors may vary. Please ask for samples.

Polylac



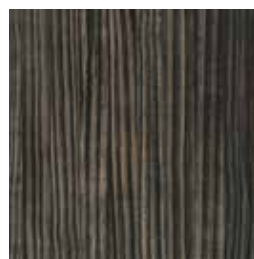
9110



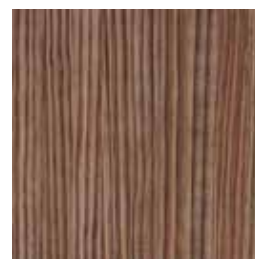
9111



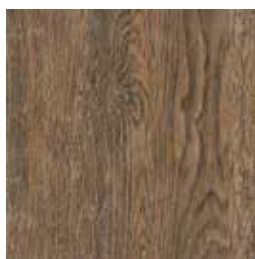
9112



9120



9121



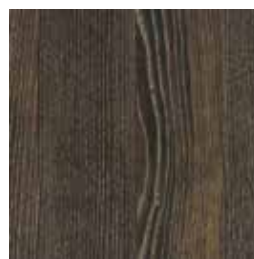
9133



9134



9135



9140



9141



9142



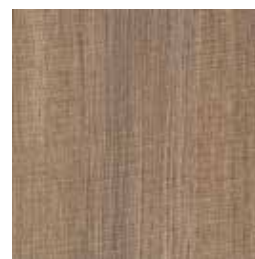
9150



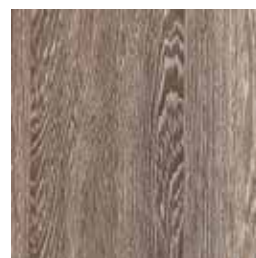
9160



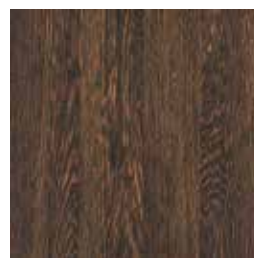
9161



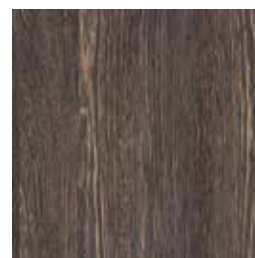
9162



9170



9171



9172

*Colors may vary. Please ask for samples.



Digital Polylac WOOD



8425



8426



8427



8428



8431



8434



8435



8438

*Colors may vary. Please ask for samples.

Unlimited possibilities



Polylac comes in many different beautiful colors and patterns, and with Polylac's digital image capabilities, we can produce marble, leather, wood, custom colors, logos...anything!

All Polylac products come with the same industry-leading gloss rating, durability, and reliability. Matte finish is also available.

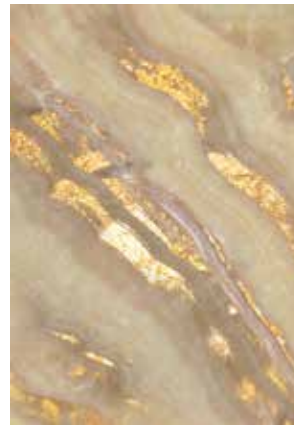
Digital Polylac MARBLE



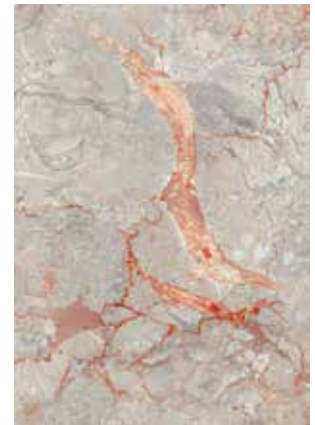
8528



8544



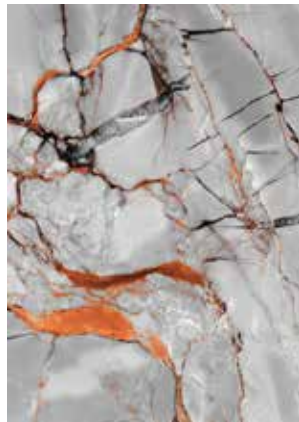
8552



8553



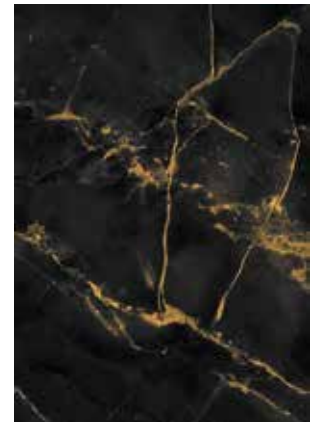
8557



8562



8577



8576

*Colors may vary. Please ask for samples.

Digital Polylac STONE



8535



8543



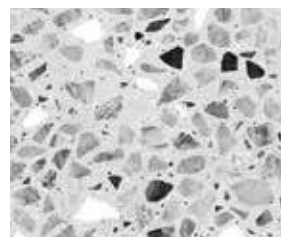
8569



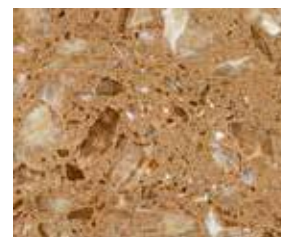
8588



Digital Polylac TERRAZZO



8650



8653



8655



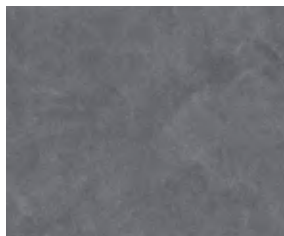
8659

*Colors may vary. Please ask for samples.

Digital Polylac LEATHER



8302



8303



8306



8308

Digital Polylac FABRIC



8641



8643



8645



8646



*Colors may vary. Please ask for samples.

Digital Polylac ART



8607



8610



8609



8612



8663



8666



*Colors may vary. Please ask for samples.

Digital Polylac EPOXY



8706



8708



8709



8710



Digital Polylac panel dimensions (mm): 18 x 1220 x 2800



8701



8702



8703



8704



8705

*Colors may vary. Please ask for samples.

TECHNICAL INFORMATIONS / POLYLAC

No	FEATURE	UNIT	RESULT	STANDARD
1	Gloss level (60° angle)	Gloss	99 GU	TS EN 14323
2	Scratch resistance	N	3,0 Newton (Class 4B)	DIN 68861 part 4
3	Assessment of surface resistance to wet heat (100°C)	Class	5 (No change)	EN 12721:09
4	Assessment of surface resistance to dry heat (140°C)	Class	5 (No change)	EN 12722:09
5	Surface abrasion resistance	-	4500 rev. (Class 4)	EN 14323 cls. 5.9
6	Behavior towards impact loading by falling steel ball	mm	No cracking	EN 14323 cls. 5.14
7	Test of water steam resistance	Class	5 (No change)	EN 14323 cls. 5.11
8	Resistance to staining	Class	5 (No change)	EN 14323 cls. 5.6
9	Assessment of surface resistance to chemical cold liquids (Acetic acid, acetone, ammonia solution, citric acid, cleaning agent, etc.)	Class	5 (No change)	TS EN 12720:2900+A1
10	Colorfastness to light	Grey Scala	4 / 5. Grade	EN 15187
11	Bending strength (*)	N / mm ²	32 N / mm ²	EN 310
12	Modulus of elasticity in bending (*)	N / mm ²	4441 N / mm ²	EN 310
13	Surface soundness (tensile strength) (*)	Mpa	1,36 N / mm ²	EN 311
14	Tensile strength vertical to the surface (*)	N / mm ²	0,54 N / mm ²	EN 319
15	Thickness tolerance	mm	± 0,3 mm	TS EN 324-1
16	Bow tolerance	-	3,5 mm / m	Gizir
17	Cold check (40 cycles, 1 h 60°C, 15 min. room temp., 1 h -30°C, 15 min. room temp.)	-	No damage	TSE
18	Antimicrobial Products – Test for Antimicrobial Activity and Efficacy	-	E.coli / Sa.aureus ≥2 (suitable)	JIS Z 2801
19	Standard Practice for Determining Resistance of Synthetic Polymeric Materials to Fungi	-	0 growth at 7, 14, 21 and 28 days (suitable)	ASTM G21
20	Width and Length tolerance	mm / m	± 5 mm	TS EN 324-1
21	Formaldehyde Potential	mg / 100g	≤ 30.0	EN 120 EN 622-1

-(*) These values are weighted average of the test results.



gizir.com

info@gizir.com

İSTANBUL

Export office & Showroom

Barbaros Mah. Begonya Sok.
Nidakule Ataşehir Kuzey Sit.
No: 3/70 Ataşehir / İstanbul

T: +90 (216) 519 33 73

ADANA

Headquarters

Organize Sanayi Bölgesi,
Çanakkale Cad. No: 17
01350 Sarıçam / Adana

T: +90 (322) 394 43 40 (pbx)