



Headquarters LX Hausys, Ltd 98, Huam-ro, Jung-gu, Seoul, Korea, 04637(LG Seoul Station Building) / Email : lxinfo@lxhausys.com / www.lxhausys.com

SALES SUBSIDIARY

U.S.A (Atlanta)

LX Hausys America Inc.
900 Circle 75 Pwky Suite#1500 Atlanta GA30339, U.S.A
TEL : +1-678-486-8220

EUROPE (Frankfurt)

LX Hausys Europe GmbH
Lyoner Str. 15 Atricom C6, D/60528 Frankfurt am Main, Germany
TEL : +49-69-583029-0

RUSSIA (Moscow)

LX Hausys Rus, LLC
Lesnaya Plaza 8th floor, 4, 4th Lesnoy pereulok, Moscow, 125047, Russia
TEL : +7-495-663-39-58

INDIA (Gurgaon)

LX Hausys India Private Ltd.
7F, Emmar MGF Digital Green, Tower B, Golf Course Ext. Road, Secotor 61,
Gurgaon-122009, Haryana, India
TEL : +91-124-421-2590

CANADA (Toronto)

LX Hausys Canada, Inc.
20 Norelco Drive, North York, Ontario, M9L 2X6, Canada
TEL : +1-905-660-4746

JAPAN (Tokyo)

LX Hausys Tokyo Branch
100-0004 Tokyo Sankei Building 25F, 1-7-2 Otemachi,
Chiyoda-ku, Tokyo, Japan
TEL : +81-3-5299-4533

REPRESENTATIVE OFFICES

TURKIYE

TK Deco Yapı Teknolojileri Limited Şirketi
Yeşilköy Mah. Atatürk Cad.
Dünya Ticaret Merkezi B2 Blok 34149 Kat:8 No: 280 Bakırköy, Istanbul
TEL : +90-212-285-11-01 / +90-535-104-11-91

TAIWAN

TAODE Enterprise Ltd.
Rm. B2, 10F., No. 49, Sec. 3, Minsheng E.
Rd., Zhongshan Dist., Taipei City 104483, Taiwan
TEL : +886-2-3771370

THAILAND

CK Cooperation Co.,Ltd
77/3 Village No.4, Bueng Kham Phroi Sub-District, Lam Luk Ka District,
Pathum Thani Province 12150, Thailand
TEL : +66-95-7982565

VIETNAM

TARA VIET NAM CONSULTING AND DEVELOPMENT.,LTD
Room 302, Sunlight house building, 12 street 1,
Tan Phu ward, District 7, Ho Chi Minh city, Viet Nam
TEL : +84-28-36200047(Office) / +84-9762-10411(Mobile)

BENIF

2023
-
2024



Interior Film



www.lxhausys.com

BENIF



Interior Film

Contents

Recommendation_추천	06
Dual_듀얼	12
Misty_미스티	16
Emboss_엠보스	18
Solid_솔리드	24
Metal_메탈	26
Classic Wood_클래식 우드	32
Big Wood_빅 우드	44
Premium Wood_프리미엄 우드	52
Wood_우드	62
Big Stone_빅 스톤	76
Stone_스톤	81
Stucco_스타코	85
Concrete / Mortar_콘크리트/모르타르	86
Marble_마블	88
Textile_텍스타일	90
Leather_레더	94
Specialty_스페셜티	96
Certification & Test Report_인증&성격서	98



LX하우시스 인테리어필름의 다양한 정보를 온라인에서 만나보세요.
Discover various information about LX Hausys Interior Films online.
www.lxhausys.com/gl/index



LX지인 인테리어필름의 Repeated Image들을 확인해보세요.
Please check the repeated images of LX Z:IN Interior Film.
www.lxbenifdesign.com



LX지인 도어와 창호를 인테리어필름과 함께 리모델링해보세요.
Try remodel your LX Z:IN doors and windows with Interior Film.
www.lxbenifcolortable.com

■ 방염 컬러 Flame Retardant ■ 비방염 컬러 Non-Flame Retardant

N 2023년 출시 신제품입니다.
This is a new product to be released in 2023.

📷 이미지에 적용된 컬러입니다.
The color is applied to the photographic image.

⚠️ 해당 컬러는 샘플북 맨 뒤 시공 유의사항을 반드시 지켜주세요.
Be sure to follow the application instructions at the back of the sample book for the relevant color.

BENIF

당신이 바라던
공간에 대한 모든 것,
Benif에 있습니다.

*Everything you could ever long for in a space,
BENIF has.*

Recommendation

Dual 듀얼

빛의 각도에 따라 때론 우아하게,
때론 유니크하게.
공간에 새로움을 더합니다.

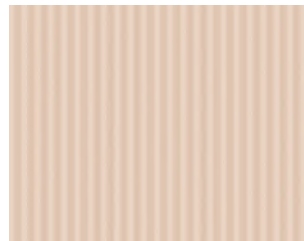
*Depending upon the angle of light,
sometimes elegantly and sometimes uniquely.
Increase novelty to the space.*



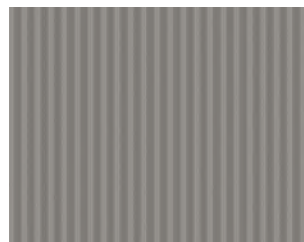
DP002



DP005



NV003



NV002



DP002 / NV003

※ 상기 이미지 안의 제품 패턴과 색상은 실제 제품과 차이가 있을 수 있음을 알려드립니다.

Recommendation

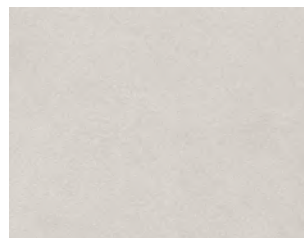
Stone 스톤

깔끔한 미스티 스톤의 배경과
오브제가 만나 꿈꾸던
미니멀한 공간이 탄생합니다.

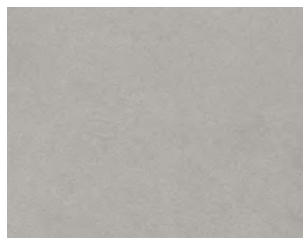
*A background of neat Misty Stone and an objet
meet to create a minimalistic space that you have
dreamed of.*



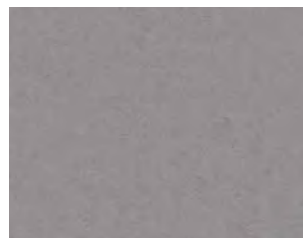
SM013



SM013



SM015



SM016

※ 상기 이미지 안의 제품 패턴과 색상은 실제 제품과 차이가 있을 수 있음을 알려드립니다.

Big Stone 빅스톤

빅 그라니트가 선사하는
중후하고 역동적인 분위기는
럭셔리함을 한층 높입니다.

*The imposing and dynamic mood presented
by Big Granite increases luxury.*



BM015



BM015



Big Granite

BM019

Big Granite

※ We notice that pattern and color of the product in the above image might differ from the actual product.

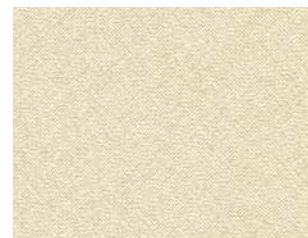
Recommendation

Textile 텍스타일

부드럽고도 섬세한 크로스 패브릭에
은은한 조명이 더해질 때,
포근함이 완성됩니다.

*When soft and detailed cross fabric is added with
delicate lighting, the coziness is completed.*

SF012



SF012



SF015

Wood 우드

빅 우드와 클래식 우드의
차분하고도 섬세한 나뭇결이
근사한 분위기를 선사합니다.

*The calm and detailed wood grain of Big Wood and
Classic Wood creates a splendid mood.*

BW020 / PW141



BW020



Walnut

PW141

Soft Walnut

※ 상기 이미지 안의 제품 패턴과 색상은 실제 제품과 차이가 있을 수 있음을 알려드립니다.

※ We notice that pattern and color of the product in the above image might differ from the actual product.

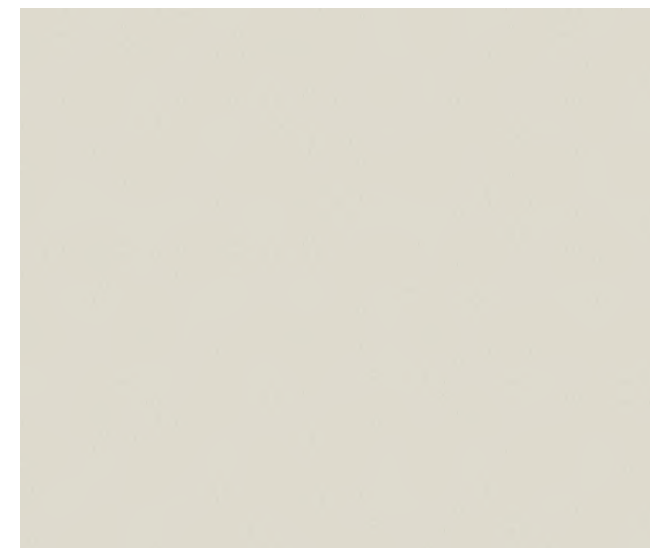
Dual 듀얼

빛의 각도에 따라 우아하고도 고급스럽게 나만의 독창적인 공간을 연출합니다.
Elegantly and luxuriously according to the angle of light. Create your own unique space.

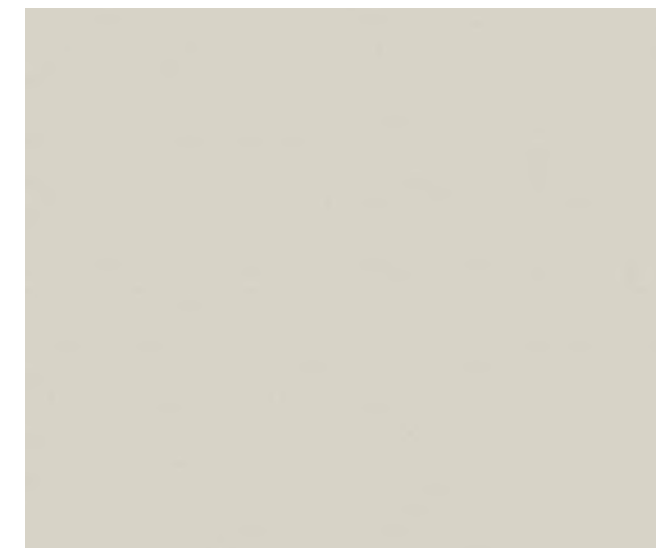


DP001 / DP002

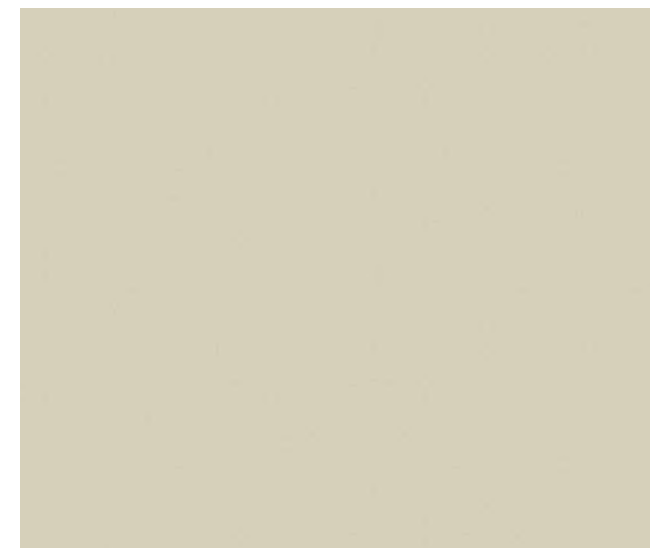
※ 상기 이미지 안의 제품 패턴과 색상은 실제 제품과 차이가 있을 수 있음을 알려드립니다.
 ※ We notice that pattern and color of the product in the above image might differ from the actual product.



DP001



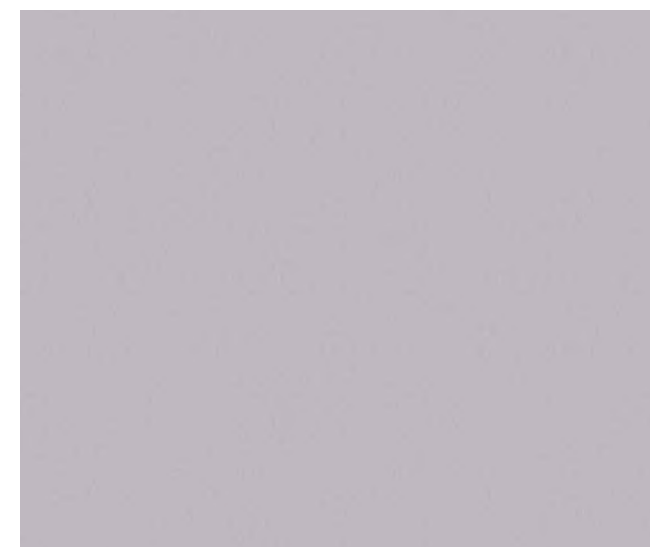
DP002



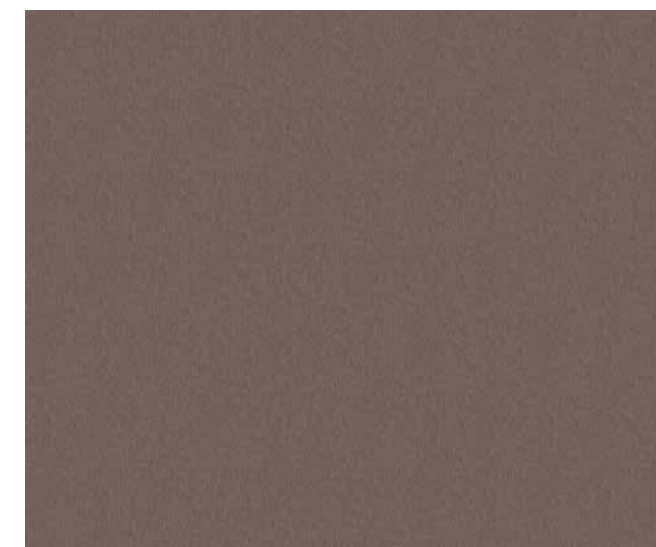
DP003



DP004



DP005



DP006

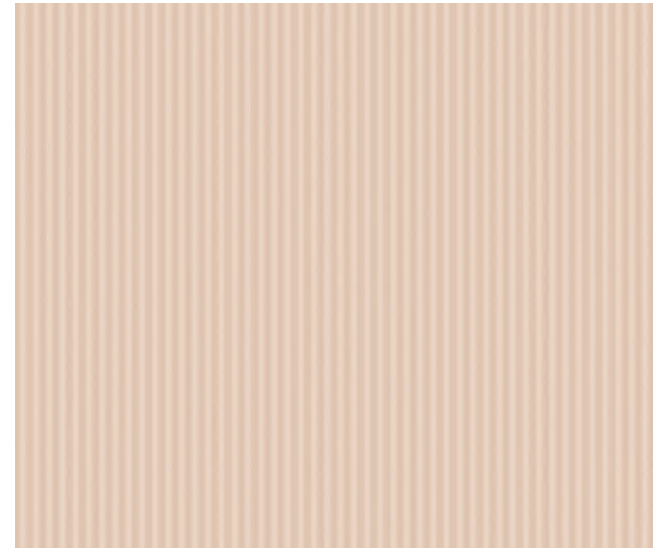
※ 제품이 보는 방향에 따라 색상이 다르게 보이므로 정확한 색상 확인을 원하실 경우, 구매 전 실제 제품을 확인해 보세요.
 ※ The product's color can appear different depending on the viewing angle, so it is recommended to check the actual product before purchasing if you want to confirm its accurate color.

Dual 듀얼

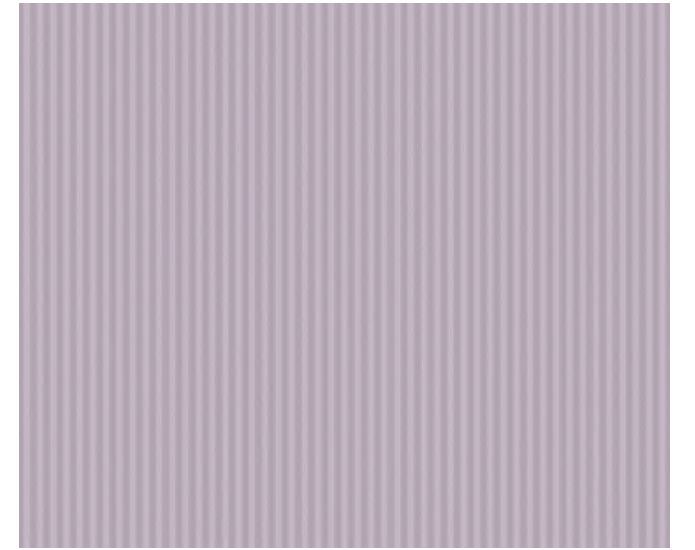


NV004

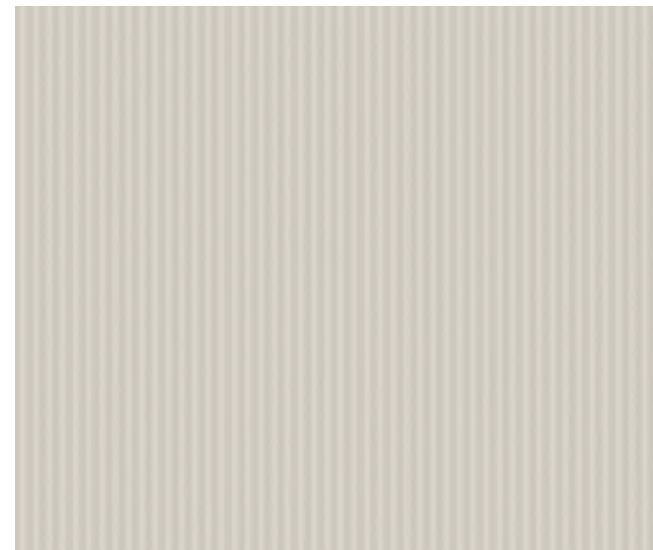
※ 상기 이미지 안의 제품 패턴과 색상은 실제 제품과 차이가 있을 수 있음을 알려드립니다.



■ NV003



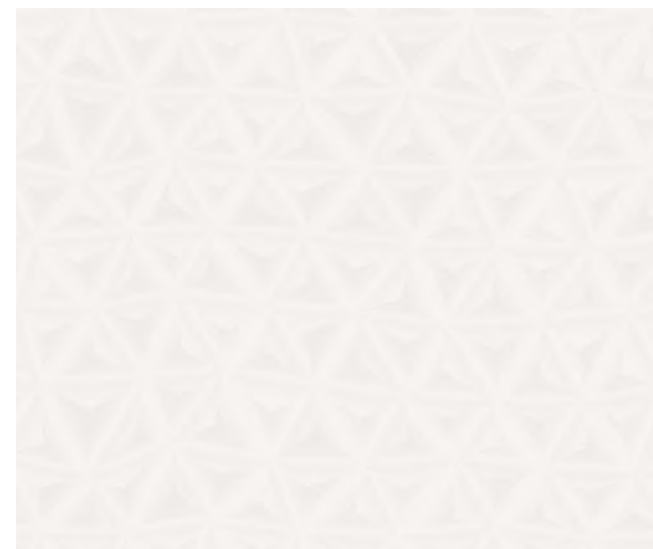
■ NV004



■ NV001



■ NV002



■ NV005



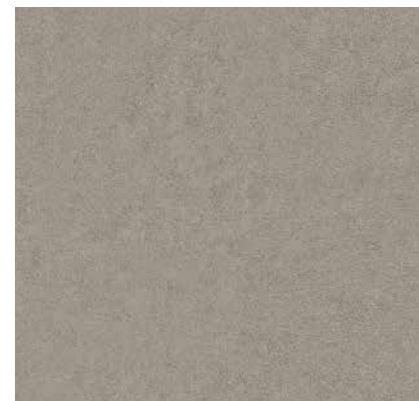
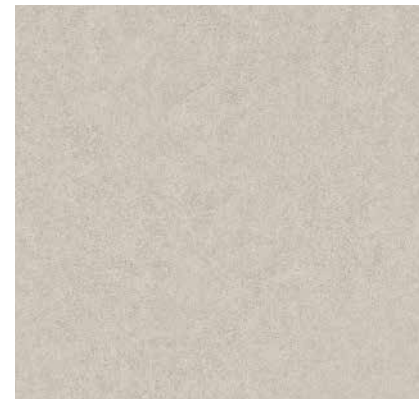
■ NV006

※ We notice that pattern and color of the product in the above image might differ from the actual product.

Misty 미스티

내추럴한 표면 위에 화이트 도장을 한 듯 부드럽고 화사한 분위기를 선사합니다.

Make a present of soft and fluorescent mood as if white paint was applied on a natural surface.



※ 상기 이미지 안의 제품 패턴과 색상은 실제 제품과 차이가 있을 수 있음을 알려드립니다.

※ We notice that pattern and color of the product in the above image might differ from the actual product.

Emboss 엠보스

은은하게 반사되는 텍스처와 다채로운 색감이 만나 온기를 더합니다.
The delicately reflective texture and colorful colors increase warmth.



RGM05

※ 상기 이미지 안의 제품 패턴과 색상은 실제 제품과 차이가 있을 수 있음을 알려드립니다.

Emboss 엠보스



■ RS174



■ RS116



■ RS104



■ RS105



■ RS170 ©



■ RS173



■ RS103



■ RS175

※ We notice that pattern and color of the product in the above image might differ from the actual product.



■RSJD1



■RS98



■RSP01



RS98 / RS150



■RS150



■RS151



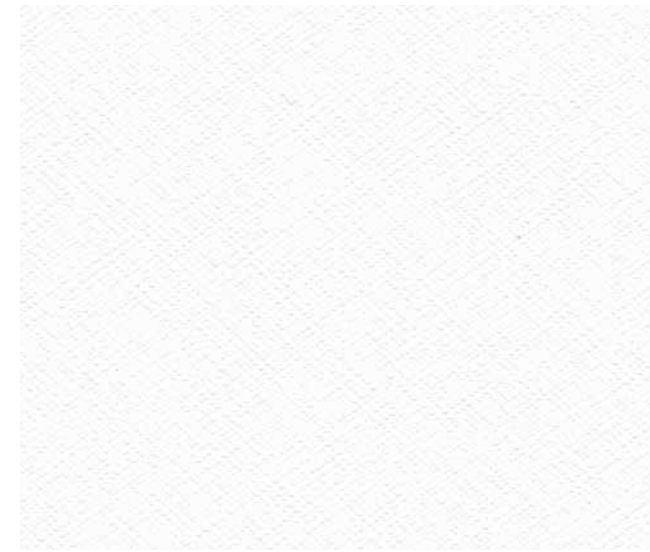
■RS106



■RS107



■RS108



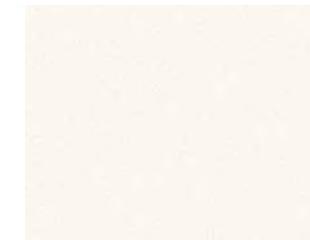
■RS101



■RS144



■RS138



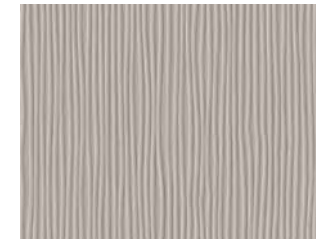
■RS160



■RS162



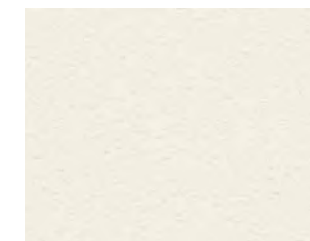
■RS159



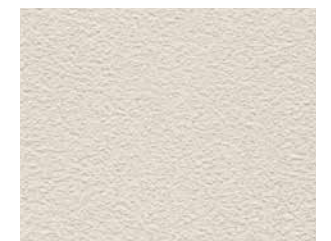
■RS161



■RS145



■RS139



■RS140



■RS141



■RS142

※ 상기 이미지 안의 제품 패턴과 색상은 실제 제품과 차이가 있을 수 있음을 알려드립니다.

※ We notice that pattern and color of the product in the above image might differ from the actual product.

Emboss 엠보스



RGM13



RGM05



RGM13



RGM03



RGM02



RGM12



RGM14



RGM15



RGM16

※ 상기 이미지 안의 제품 패턴과 색상은 실제 제품과 차이가 있을 수 있음을 알려드립니다.

※ We notice that pattern and color of the product in the above image might differ from the actual product.

Solid 솔리드



※ 상기 이미지 안의 제품 패턴과 색상은 실제 제품과 차이가 있을 수 있음을 알려드립니다.

※ We notice that pattern and color of the product in the above image might differ from the actual product.

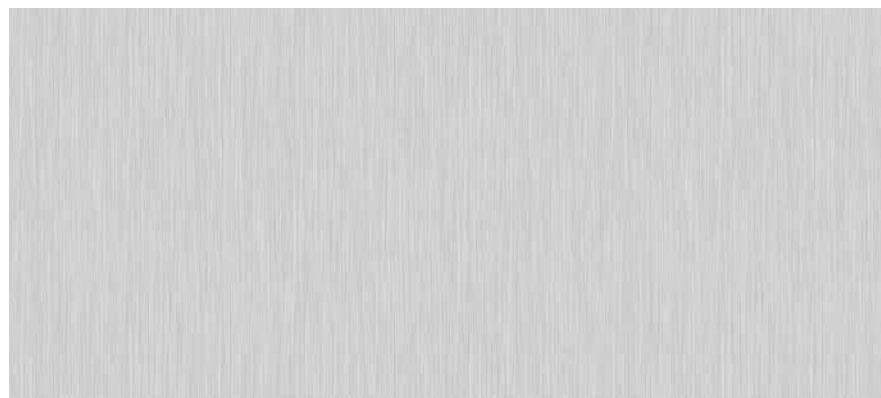
Metal 메탈

화려한 느낌의 메탈은 세련되고 럭셔리한 공간을 완성합니다.
Gorgeous metal completes refined and luxurious space.



PME05 / PME06

※ 상기 이미지 안의 제품 패턴과 색상은 실제 제품과 차이가 있을 수 있음을 알려드립니다.



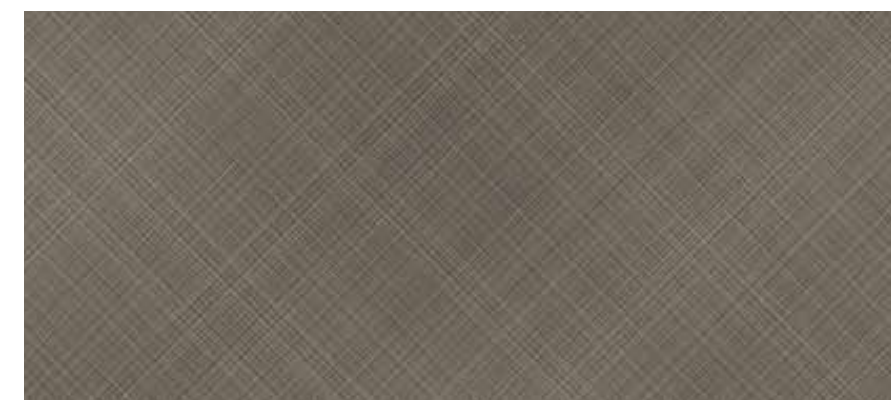
■ PME01



■ PME02



■ PME06



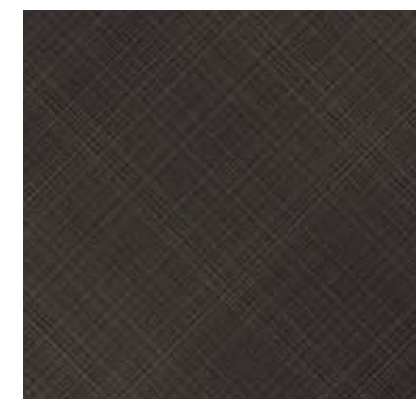
■ PME08



■ PME04



■ PME09



■ PME07



■ PME10



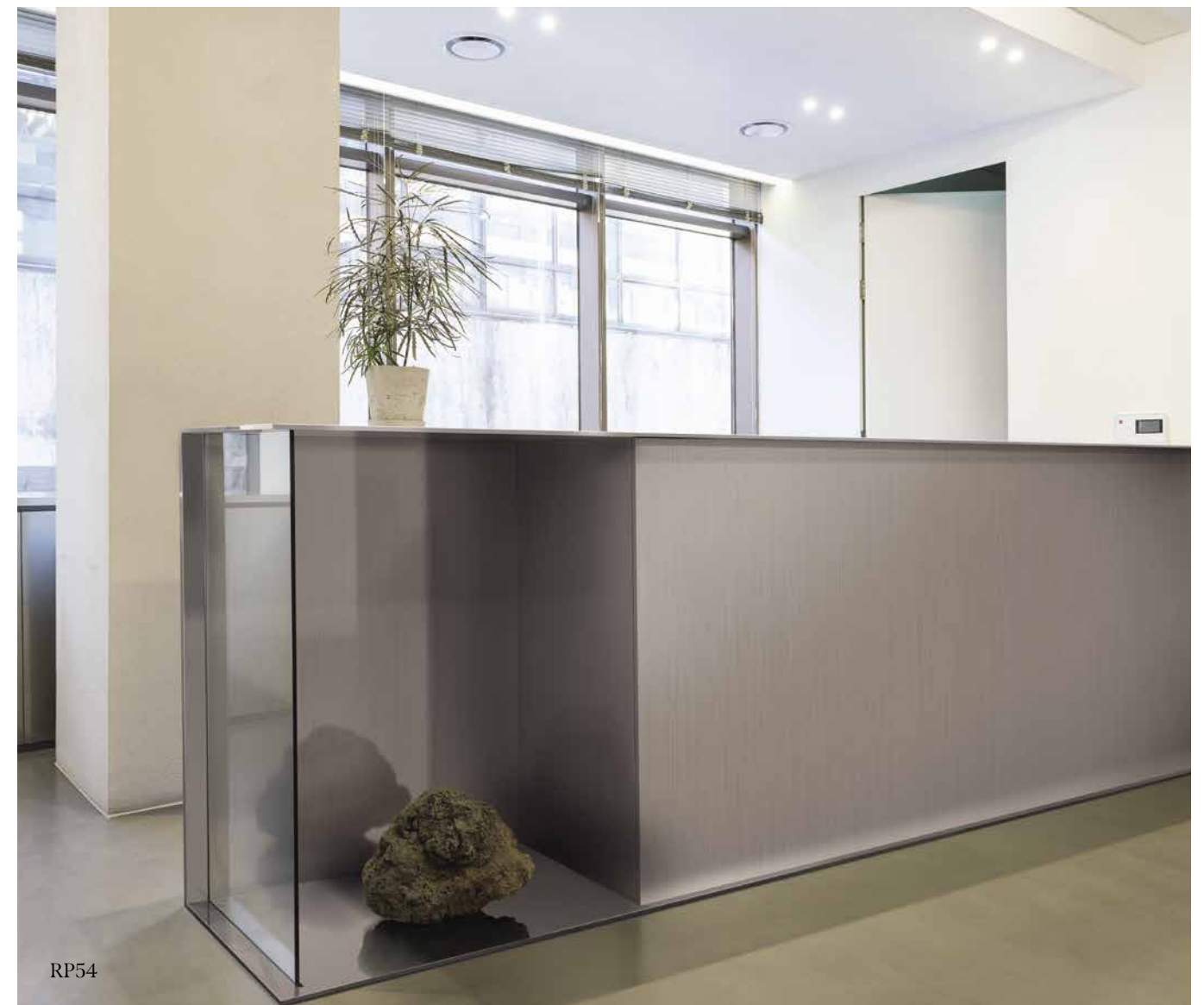
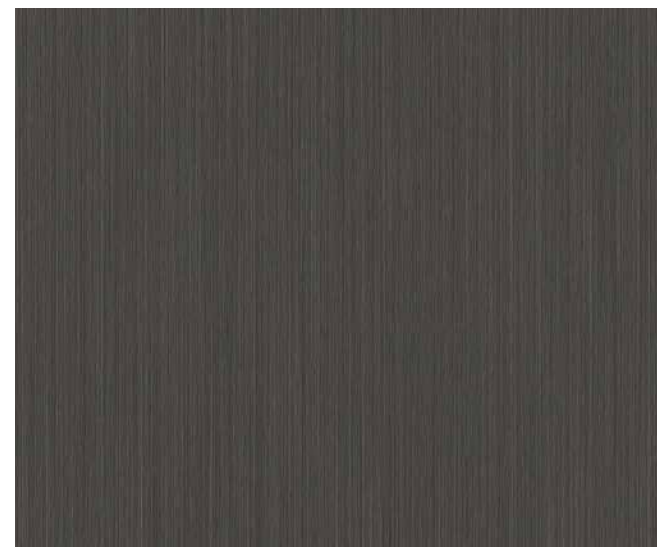
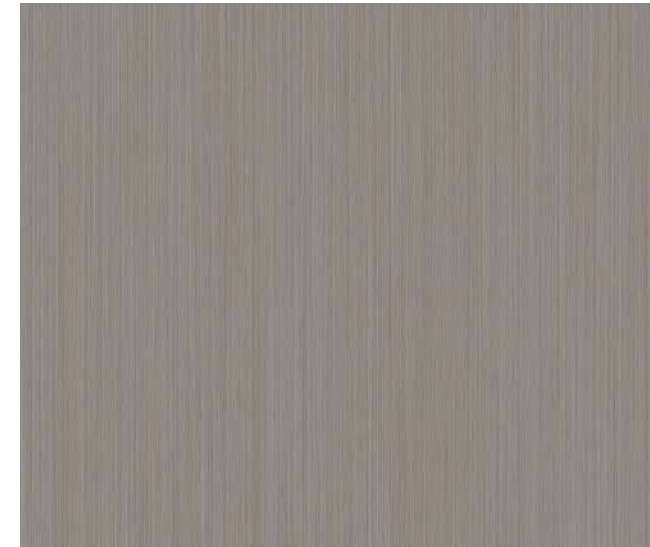
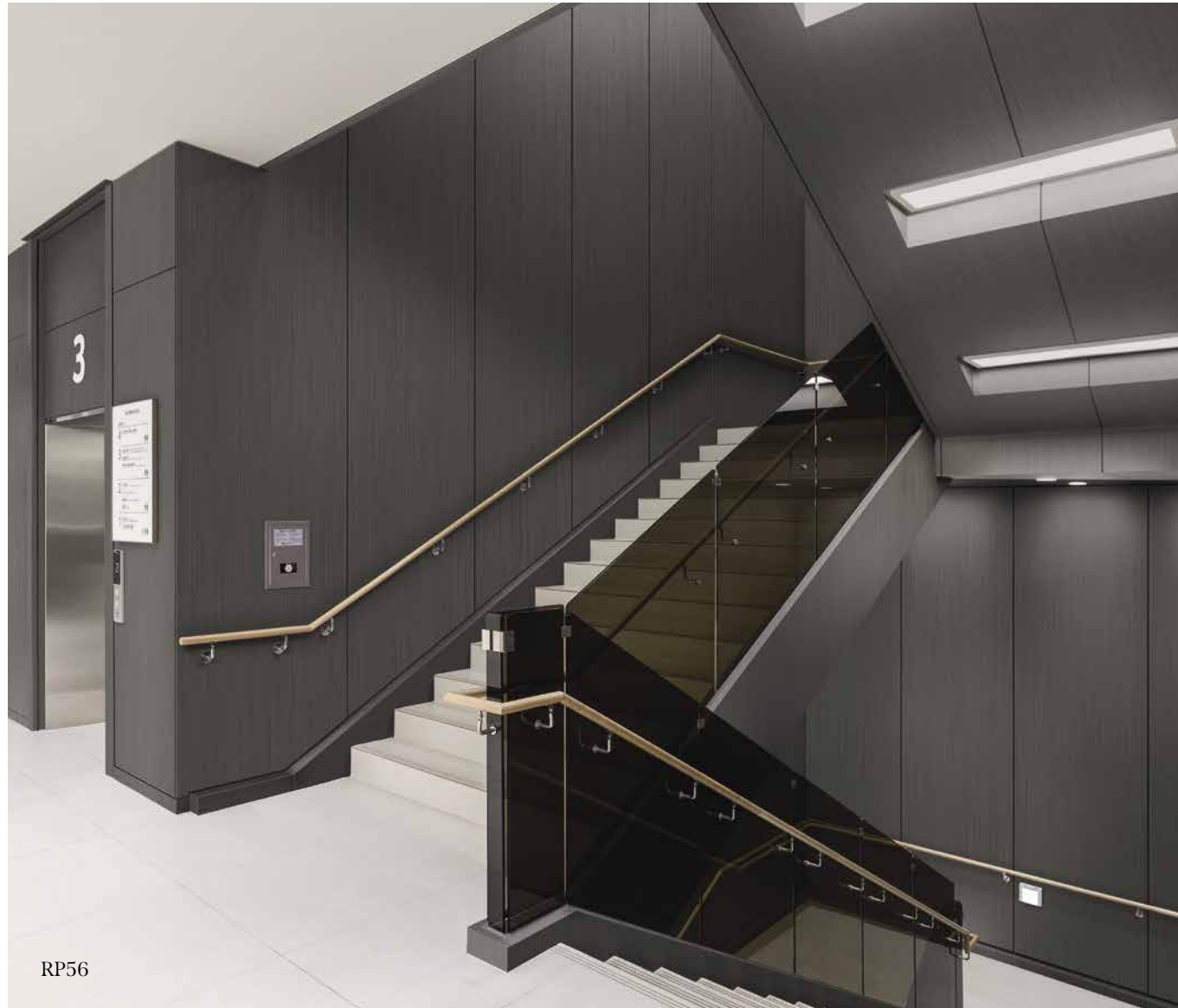
■ PME03



■ PME05

※ We notice that pattern and color of the product in the above image might differ from the actual product.

Metal 메탈



RP57

RP56

RP54

※ 상기 이미지 안의 제품 패턴과 색상은 실제 제품과 차이가 있을 수 있음을 알려드립니다.

※ We notice that pattern and color of the product in the above image might differ from the actual product.

Metal 메탈



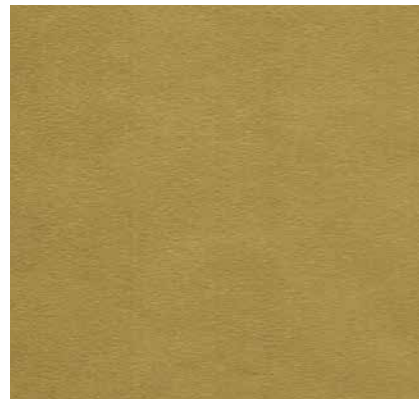
■MS21



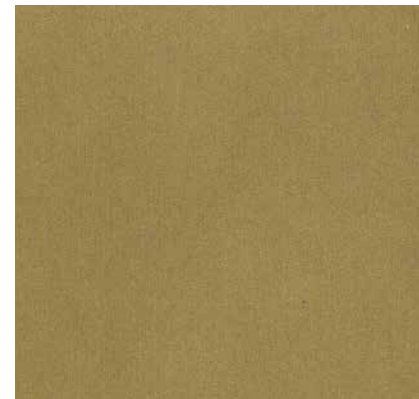
■MS18



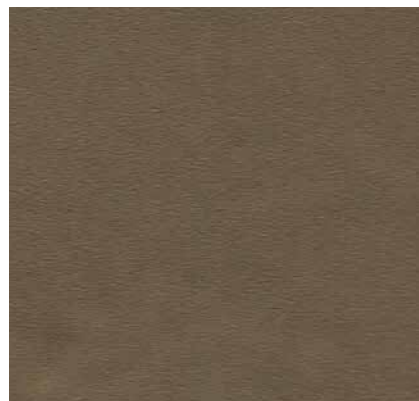
■MS09



■RP48



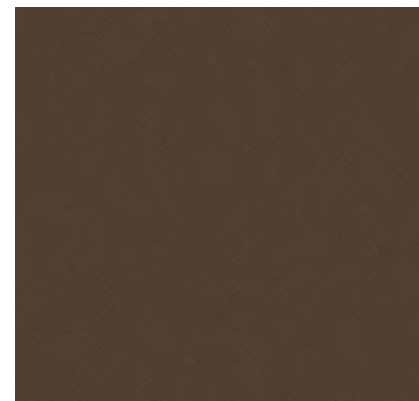
■RP06



■RP47



■RP45



■RP52



■MS01



■MS19



■RP08



■RP04



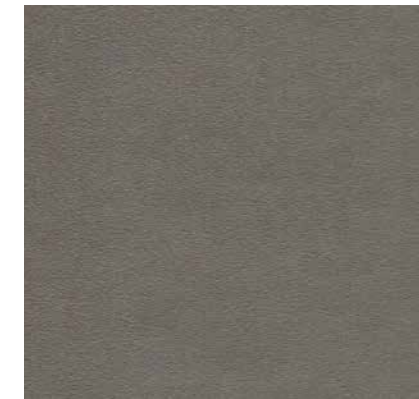
■RP42



■RP03



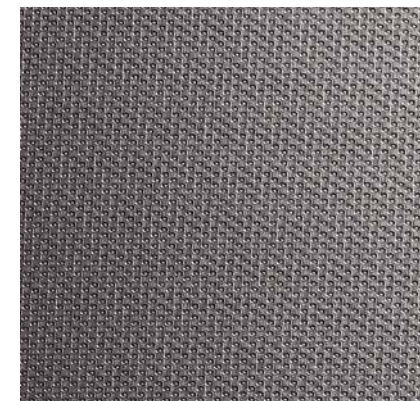
■MS20



■RP46



■RP49



■RP53



■RP50



■RP51

※ 상기 이미지 안의 제품 패턴과 색상은 실제 제품과 차이가 있을 수 있음을 알려드립니다.

※ We notice that pattern and color of the product in the above image might differ from the actual product.

Classic Wood 클래식 우드

나무보다 더 나무답게, 나무의 부드러운 숨결을 공간 안에 가득 담습니다.
More being like a tree than a tree, Put its soft breath in the full of space.



PW141

* 상기 이미지 안의 제품 패턴과 색상은 실제 제품과 차이가 있을 수 있음을 알려드립니다.



■ PW141

Soft Walnut



■ PW142

Soft Walnut



■ PW143

Soft Walnut

* We notice that pattern and color of the product in the above image might differ from the actual product.

Classic Wood 클래식 우드



■ PW116

Standard Oak



■ PW126

Aiguille Oak



■ PW129

Aiguille Oak



■ PW123

Walnut



■ PW117

Standard Oak



■ PW136

Eiche



■ PW127

Aiguille Oak



■ PW113

Slap Oak



PW123

※ 상기 이미지 안의 제품 패턴과 색상은 실제 제품과 차이가 있을 수 있음을 알려드립니다.

※ We notice that pattern and color of the product in the above image might differ from the actual product.

Classic Wood 클래식 우드



■ PW105

Teak



■ PW109

Ash



■ PW130

Aiguille Oak



■ PW139

Olive Ash



■ PW106

Teak



■ PW110

Ash



PW105



■ PW133

Danish Teak



■ PW131

Aiguille Oak

※ 상기 이미지 안의 제품 패턴과 색상은 실제 제품과 차이가 있을 수 있음을 알려드립니다.

※ We notice that pattern and color of the product in the above image might differ from the actual product.

Classic Wood 클래식 우드



■ PW137

Eiche



■ PW118

Standard Oak



■ PW132

Danish Teak



■ PW114

Slap Oak



■ PW119

Standard Oak



■ PW140

Olive Ash



■ PW102

Oak



■ PW101

Oak



PW118

※ We notice that pattern and color of the product in the above image might differ from the actual product.

※ 상기 이미지 안의 제품 패턴과 색상은 실제 제품과 차이가 있을 수 있음을 알려드립니다.

Classic Wood 클래식 우드



■ PW103

Oak



■ PW134

Danish Teak



■ PW107

Teak



■ PW121

Standard Oak



■ PW108

Teak



■ PW124

Walnut



■ PW115

Slap Oak



■ PW125

Walnut

※ 상기 이미지 안의 제품 패턴과 색상은 실제 제품과 차이가 있을 수 있음을 알려드립니다.

※ We notice that pattern and color of the product in the above image might differ from the actual product.

Classic Wood 클래식 우드



■ PW138 🍷 Olive Ash



■ PW111 🍷 Ash



■ PW112 🍷 Ash



■ PW128 🍷 Aiguille Oak



■ PW120 🍷 Standard Oak



■ PW104 🍷 Oak



■ PW135 🍷 🍷 Danish Teak



■ PW122 🍷 Standard Oak

※ 상기 이미지 안의 제품 패턴과 색상은 실제 제품과 차이가 있을 수 있음을 알려드립니다.

※ We notice that pattern and color of the product in the above image might differ from the actual product.

Big Wood 빅우드

우드 슬랩의 커다랗고 웅장한 나이테, 길게 뻗은 나뭇결을 오롯이 느껴보세요.
Feel the huge and majestic annual rings of the wood slab and the long grain of the wood.



BW021

※ 상기 이미지 안의 제품 패턴과 색상은 실제 제품과 차이가 있을 수 있음을 알려드립니다.



■BW020

Walnut



■BW021

Walnut



■BW023

Walnut



■BW022

Walnut

※ We notice that pattern and color of the product in the above image might differ from the actual product.

Big Wood 빅우드



■BW016 Teak



■BW017 Teak



■BW018 Teak



■BW019 Teak

※ 상기 이미지 안의 제품 패턴과 색상은 실제 제품과 차이가 있을 수 있음을 알려드립니다.

※ We notice that pattern and color of the product in the above image might differ from the actual product.

Big Wood 빅우드



■BW001

Ash



■BW007

Antique Oak



■BW010

Lauan



■BW005

Oak



■BW014

Washed Ash



■BW013

Lauan



■BW015

Washed Ash



■BW006

Oak



DR'S SOLUTION

BW010

※ 실사 이미지 간의 색을 대인과 색상은 실제 제품과 차이가 있을 수 있음을 알려드립니다.

※ We notice that pattern and color of the product in the above image might differ from the actual product.

Big Wood 빅우드



BW008



■ BW008

Antique Oak



■ BW009

Antique Oak



■ BW004

Oak



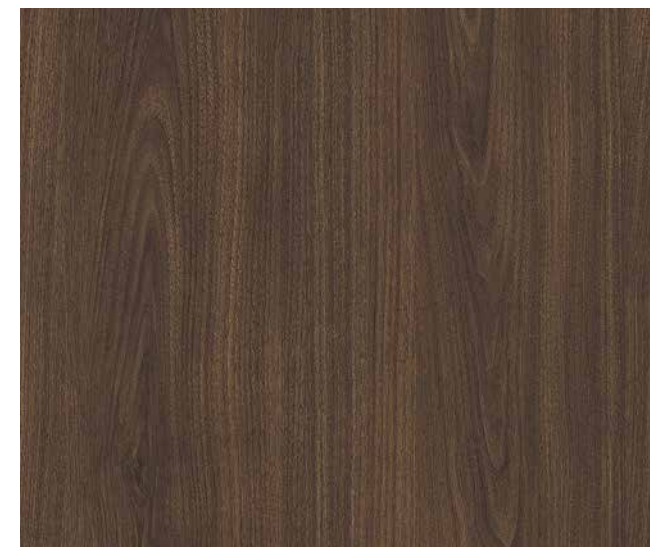
■ BW011

Luan



■ BW002

Walnut



■ BW003

Walnut



■ BW012

Luan

※ 상기 이미지 안의 제품 패턴과 색상은 실제 제품과 차이가 있을 수 있음을 알려드립니다.

※ We notice that pattern and color of the product in the above image might differ from the actual product.

Premium Wood 프리미엄 우드

깊이 있고 자연스러운 나뭇결을 있는 그대로 고스란히 담습니다.
Put the deep and natural wood grain into itself as it is.



NW041



■NW102 Oak



■NW080 Castagno Cardduci



■NW099 Walnut



■NW041 White Oak



■NW112 Ash



■NW073 Birch



NW078



■NW071 Maple



■NW057 Oak



■NW032 Oak



■NW078 Teak



■NW062 Wizard Grain



■NW070 Ash

※ 상기 이미지 안의 제품 패턴과 색상은 실제 제품과 차이가 있을 수 있음을 알려드립니다.

※ We notice that pattern and color of the product in the above image might differ from the actual product.

Premium Wood 프리미엄 우드



NW014

Oak



NW038

Ash



NW085

Oak



NW033

Oak



NW039

Ash



NW088

Teak



NW042

White Oak



NW006

Amazahoue



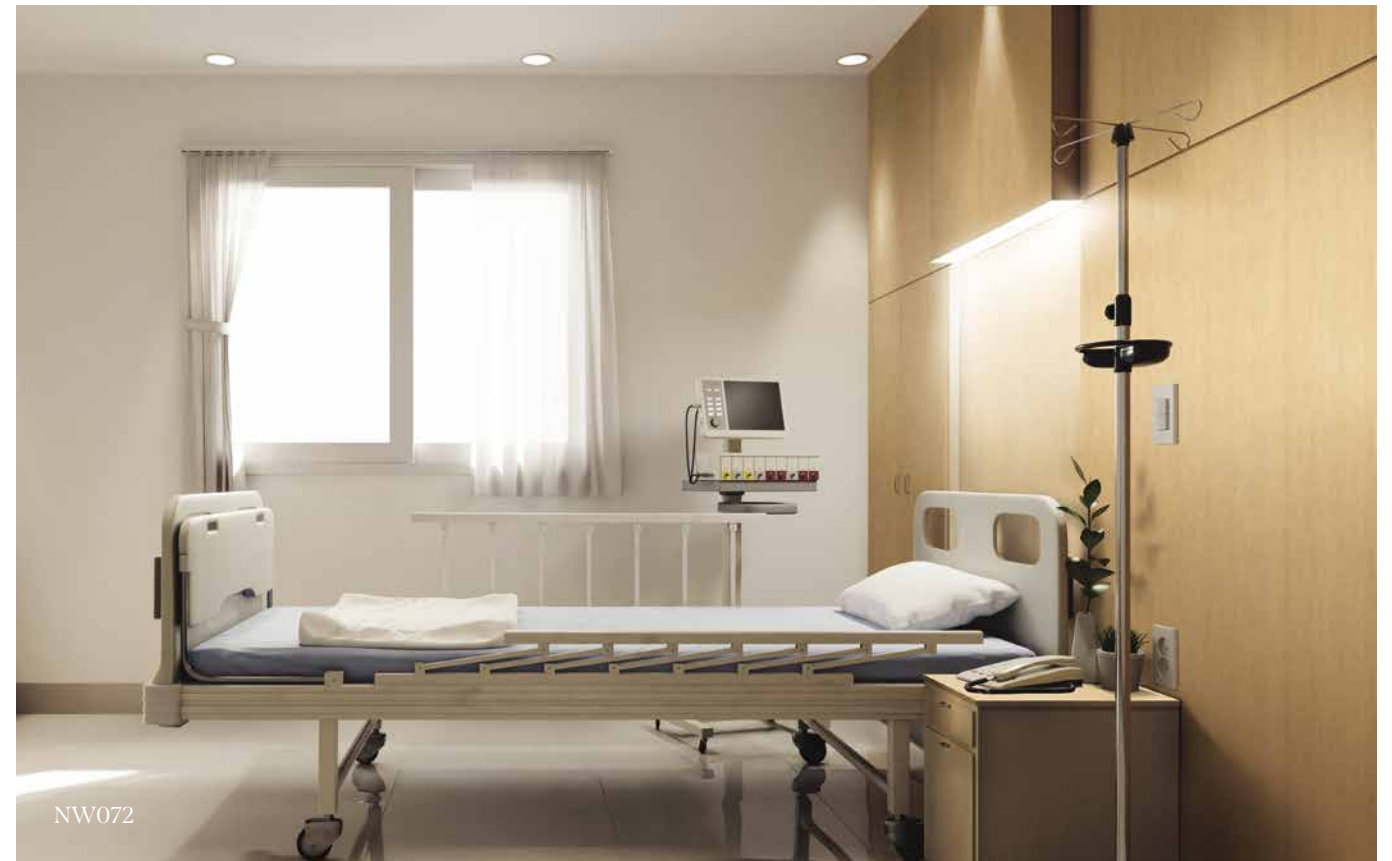
NW083

Oak



NW034

Oak



NW072



NW072

Teak



NW059

Oak



NW058

Oak



NW044

Walnut



NW067

Teak



NW043

White Oak

※ 상기 이미지 안의 제품 패턴과 색상은 실제 제품과 차이가 있을 수 있음을 알려드립니다.

※ We notice that pattern and color of the product in the above image might differ from the actual product.

Premium Wood 프리미엄 우드



NW089 Teak



NW045 Walnut



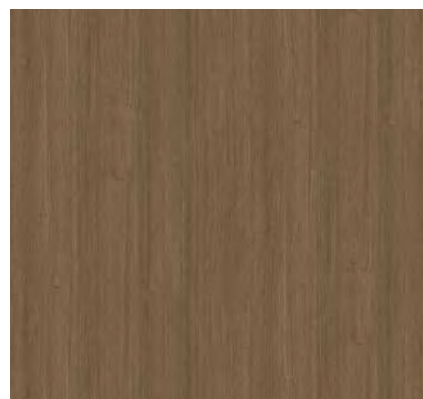
NW007 Amazahoue



NW087 Oak



NW060



NW060 Walnut



NW008 Amazahoue



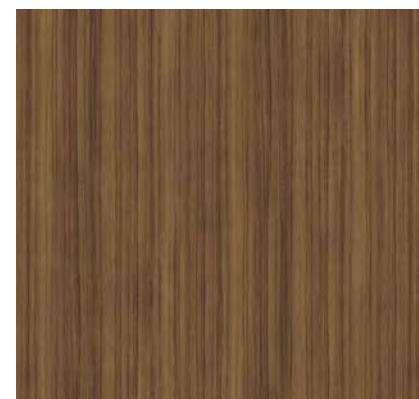
NW104



NW046 Walnut



NW104 Oak



NW063 Teak



NW055 Teak



NW090 Teak

※ 상기 이미지 안의 제품 패턴과 색상은 실제 제품과 차이가 있을 수 있음을 알려드립니다.

※ We notice that pattern and color of the product in the above image might differ from the actual product.

Premium Wood 프리미엄 우드



NW114



NW111 Ash



NW110 Teak



NW053 Teak



NW114 Ash



NW113 Ash



NW082 Oak



NW109



NW100 Walnut



NW101 Walnut



NW092 Line Teak



NW086 Oak



NW109 Teak



NW084 Oak

※ 상기 이미지 안의 제품 패턴과 색상은 실제 제품과 차이가 있을 수 있음을 알려드립니다.

※ We notice that pattern and color of the product in the above image might differ from the actual product.

Premium Wood 프리미엄 우드



NW116



NW116 © Brushed Oak



NW120 Washed Oak



NW122 Washed Oak



NW119 Brushed Oak



NW117 Brushed Oak



NW121 Washed Oak



NW123 Washed Oak



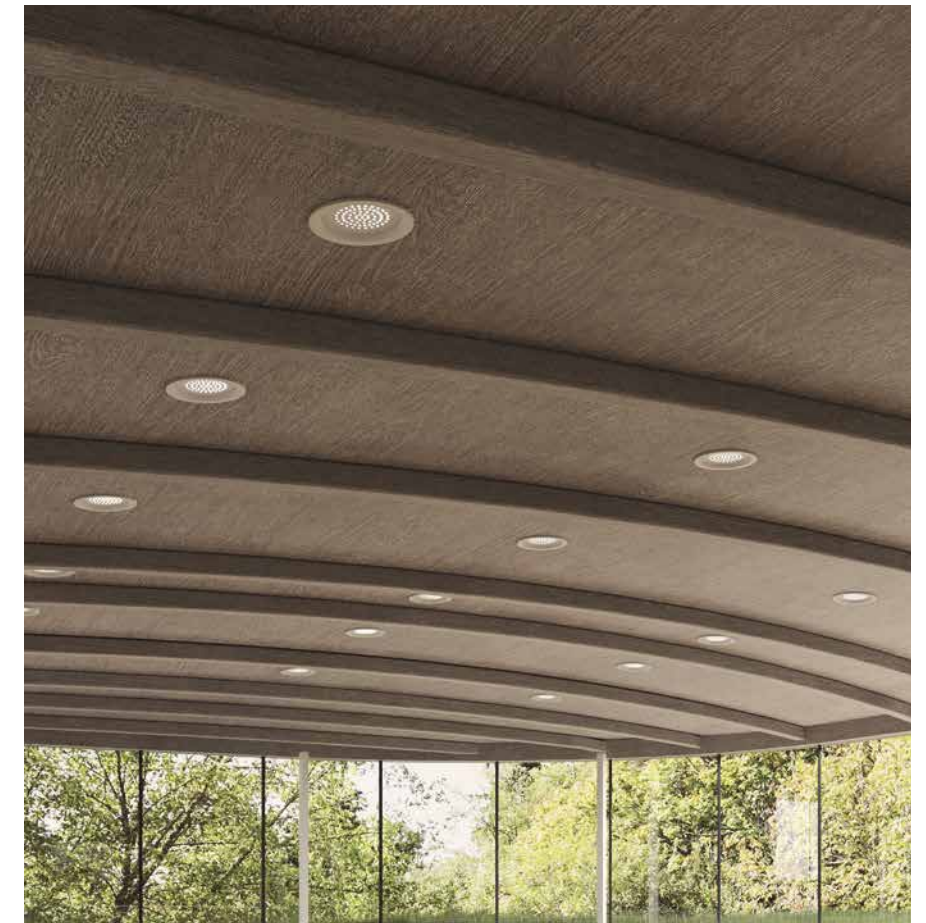
NW118 © Brushed Oak



NW015 Oak



NW068 Padouk



NW118



NW017 Oak



NW056 Teak

※ 상기 이미지 안의 제품 패턴과 색상은 실제 제품과 차이가 있을 수 있음을 알려드립니다.

※ We notice that pattern and color of the product in the above image might differ from the actual product.

Wood 우드

나무만이 갖고 있는 다양한 색감과 친근한 아름다움을 느껴보세요.

Feel the variety of colors and heimish beauty that only woods have.



DW653

※ 상기 이미지 안의 제품 패턴과 색상은 실제 제품과 차이가 있을 수 있음을 알려드립니다.



DW656 Oak



DW651 Ash



DW654 Oak



DW633 Oak



DW647 Washed Oak



DW652 Maple



DW637 Elm



DW648 White Oak



CW619 Oak



DW634 Oak



DW653 Ash



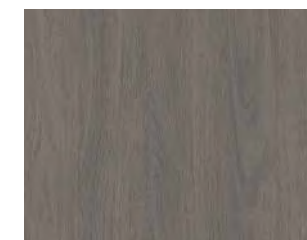
DW650 Ash



DW638 Elm



DW655 Oak



DW649 Painted Oak

※ We notice that pattern and color of the product in the above image might differ from the actual product.

Wood 우드



DW643 Ash



CW606 Elm



CW611 Ash



DW639 Ash



CW616 Elm



CW390 Walnut



DW635 Ash



CW618 Washed Oak



CW603 Oak



CW556 Oak



CW459 Thinwin



DW456 Teak



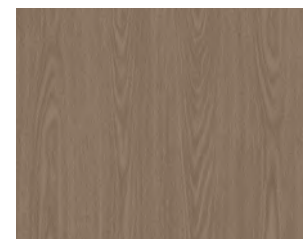
DW636 Elm



CW292 Oak



DW642



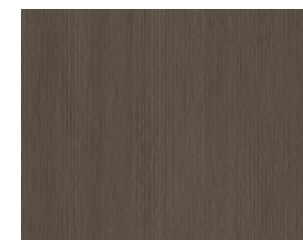
DW642 Ash



CW407 Wizard Grain



CW466 Walnut



CW408 Wizard Grain



DW467 Walnut



CW624 Oak

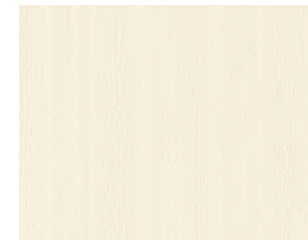
※ 상기 이미지 안의 제품 패턴과 색상은 실제 제품과 차이가 있을 수 있음을 알려드립니다.

※ We notice that pattern and color of the product in the above image might differ from the actual product.

Wood 우드



CW530



■ CW511 Elm



■ CW552 Birch



■ CW437 Cherry



■ CW530 Ash



■ DW406 Wizard Grain



■ CW424 Olive Line



■ CW527 Maple



■ CW575 Ash



■ CW521 Pine



■ CW600 Ash



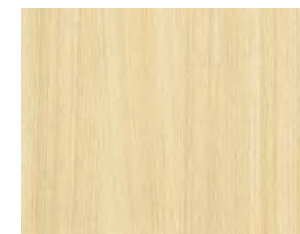
■ CW544 Rosewood



■ CW240 Elm



■ CW597 Oak



■ DW161 Oak



■ DW644 Ash



■ CW506 Teak



■ DW182 Teak



■ CW626 Oak



■ CWPF3 Oak

※ 상기 이미지 안의 제품 패턴과 색상은 실제 제품과 차이가 있을 수 있음을 알려드립니다.

※ We notice that pattern and color of the product in the above image might differ from the actual product.

Wood 우드



■ CW141 Maple



■ CW531 Ash



■ DW548 Oak



■ DW207 Teak



■ CW509 Elm



■ CW615 Oak



■ CW557 Oak



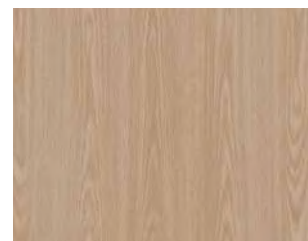
■ CW518 Ash



■ DW549 Oak



■ CW604 Washed Oak



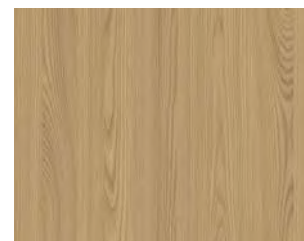
■ DW640 Ash



■ CW605 Washed Oak



■ DW308 Oak



■ DW645 Ash



■ CW151 Oak



■ DW159 Oak



■ CW358 Castagno Cardduci



DW645



■ CW441 Bamboo



■ CW314 Ash



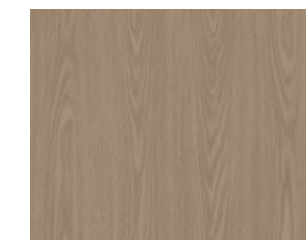
■ CW512 Teak



■ CW454 Noce



■ CWAC1 Oak



■ DW641 Ash

※ 상기 이미지 안의 제품 패턴과 색상은 실제 제품과 차이가 있을 수 있음을 알려드립니다.

※ We notice that pattern and color of the product in the above image might differ from the actual product.

Wood 우드



CW599 Oak



DW307 Oak



CW519 Ash



CWSH2 Oak



CW602 Ash



CW601 Ash



CW554 Birch



CW582 Teak



CW535 Oak



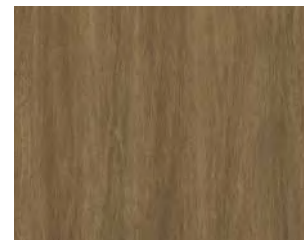
CW431 Walnut



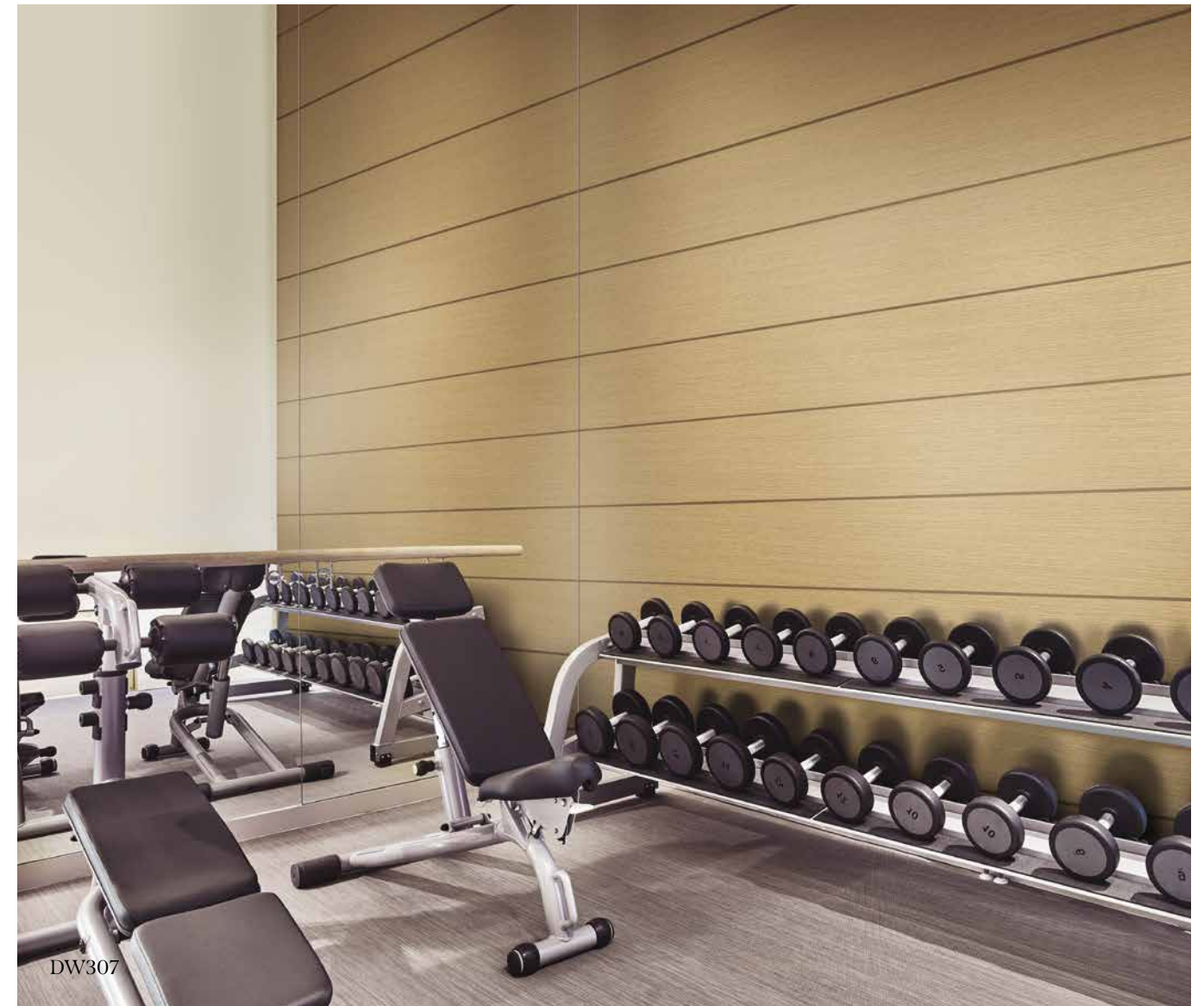
CW579 Bao



CW370 Teak



CW469 Padouk



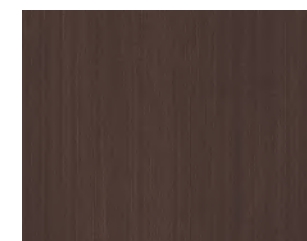
※ 상기 이미지 안의 제품 패턴과 색상은 실제 제품과 차이가 있을 수 있음을 알려드립니다.



FWES3 Walnut



DW371 Teak



CW316 Ash



CW356 Coconut



CW152 Walnut



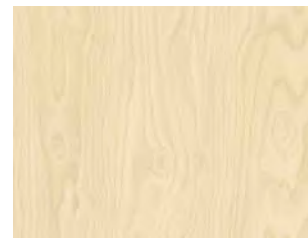
CW88 Cherry

※ We notice that pattern and color of the product in the above image might differ from the actual product.

Wood 우드



CW537



■ CW537[®] Birch



■ CW590 Birch



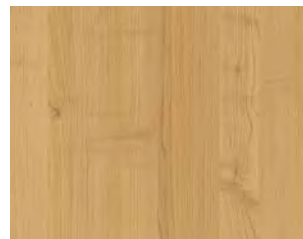
■ CW79 Maple



■ CW175 Oak



■ CW598 Oak



■ DW157 Maple



■ CW453 Noce



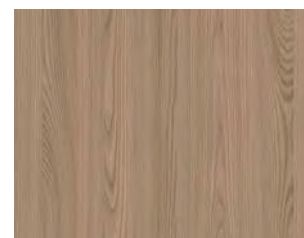
■ DW646 Ash



■ CW154 Teak



■ DW398 Green Pine



■ DW646 Ash



■ CW258 Oak



■ DW550 Oak



■ CW609 Walnut



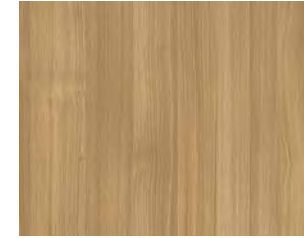
■ DW180 Teak



■ CW427 Noce



■ DW179 Teak



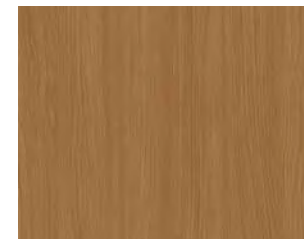
■ CW455 Noce



■ DW180 Teak



■ CW124 Cherry



■ CWB1 Cherry



■ DW400 Antique Pine



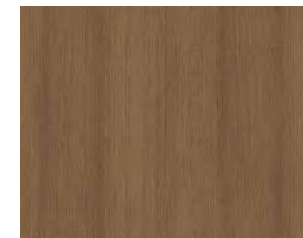
■ CW320 Zebrano



■ CW111 Cherry



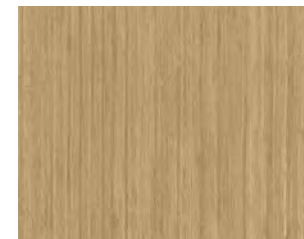
■ CW513 Teak



■ CW150 Teak



■ CW177 Teak



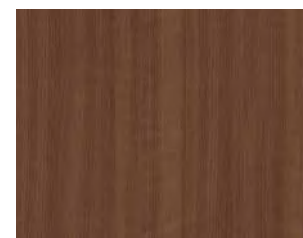
■ CW44 Anegre



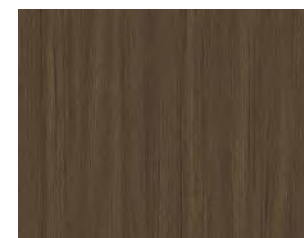
■ CW348 Rosewood



■ CW87 Walnut



■ CW69 Cherry



■ DW190 Teak

※ 상기 이미지 안의 제품 패턴과 색상은 실제 제품과 차이가 있을 수 있음을 알려드립니다.

※ We notice that pattern and color of the product in the above image might differ from the actual product.

Wood 우드



SW010



■ SW008



■ SW010



■ SW004



■ SW011



■ SW009



■ SW005



■ SW007



■ SW001



■ SW002



SW007



■ SW012



■ SW006



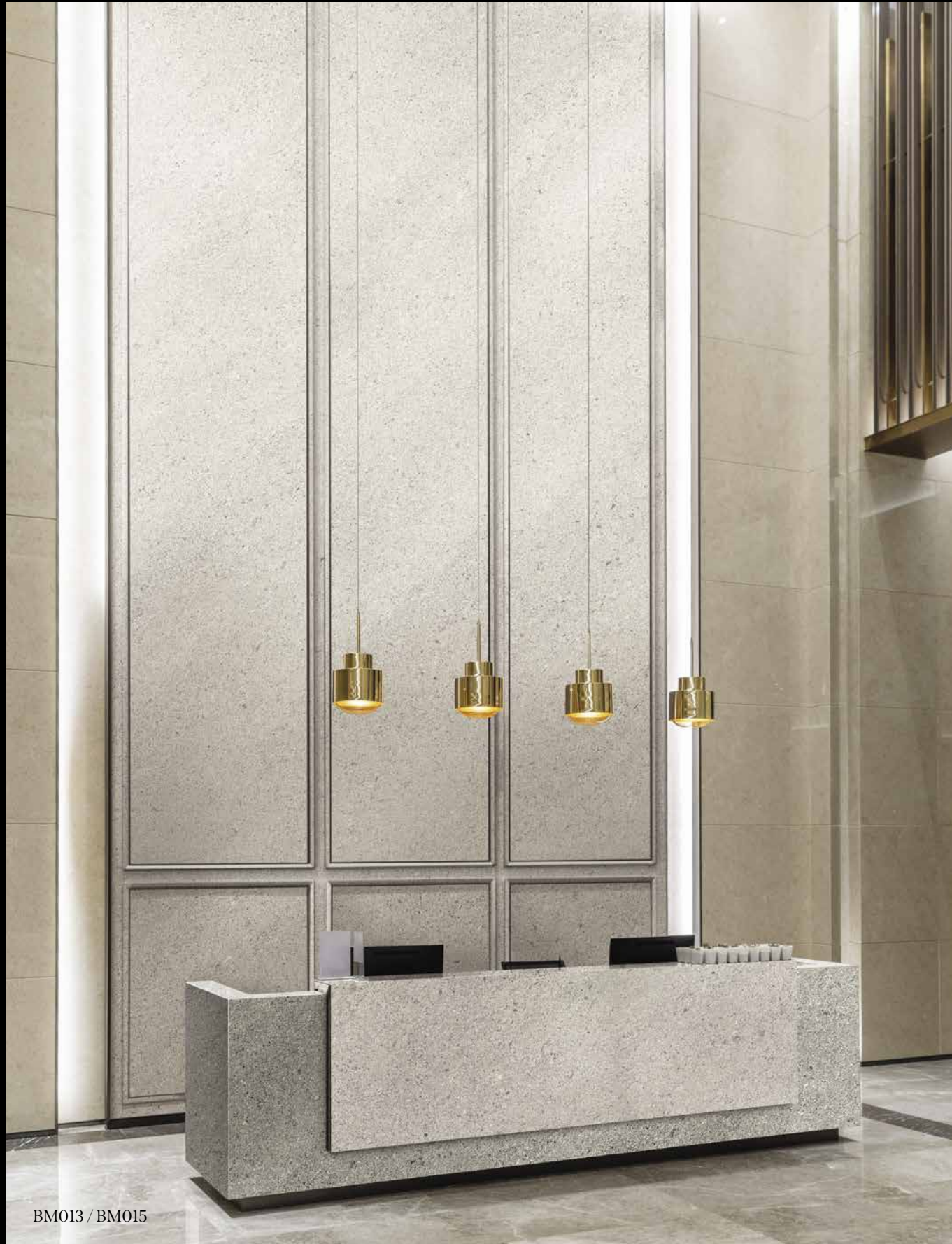
■ SW003

※ 상기 이미지 안의 제품 패턴과 색상은 실제 제품과 차이가 있을 수 있음을 알려드립니다.

※ We notice that pattern and color of the product in the above image might differ from the actual product.

Big Stone 빅스톤

빅 슬랩의 웅장한 마블링과 곧게 뻗은 크랙의 숨결을 느껴보세요.
Feel the majestic marbling of the big slab and the breath of straight cracks.



BM013 / BM015



BM013

Big Granite



BM015

Big Granite



BM019

Big Granite

※ 상기 이미지 안의 제품 패턴과 색상은 실제 제품과 차이가 있을 수 있음을 알려드립니다.

※ We notice that pattern and color of the product in the above image might differ from the actual product.

Big Stone 빅스톤



BM016



BM016

Big Travertine



BM017

Big Travertine



BM001

Light Marbling



BM007

Arabescato



BM008

Borghini



BM002

Marble



BM006

Marquina

※ 상기 이미지 안의 제품 패턴과 색상은 실제 제품과 차이가 있을 수 있음을 알려드립니다.

※ We notice that pattern and color of the product in the above image might differ from the actual product.

Big Stone 빅스톤



BM009 Galaxy Marble



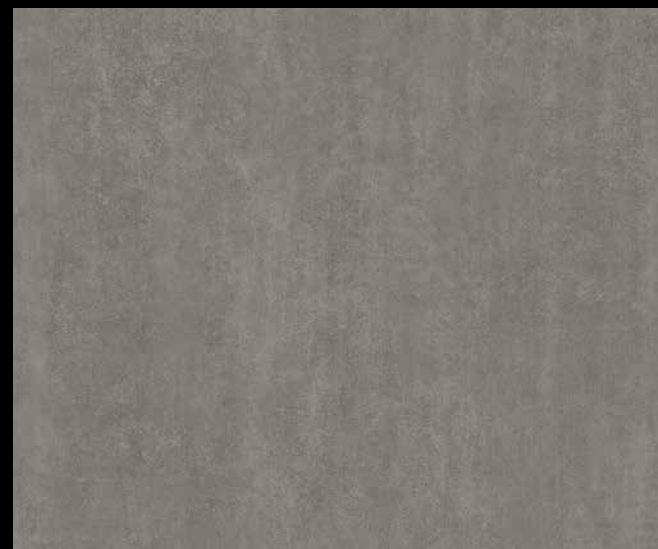
BM010 Galaxy Marble



BM003 Gray Marble



BM004 Dark Gray Marble



BM011 Bulky Concrete

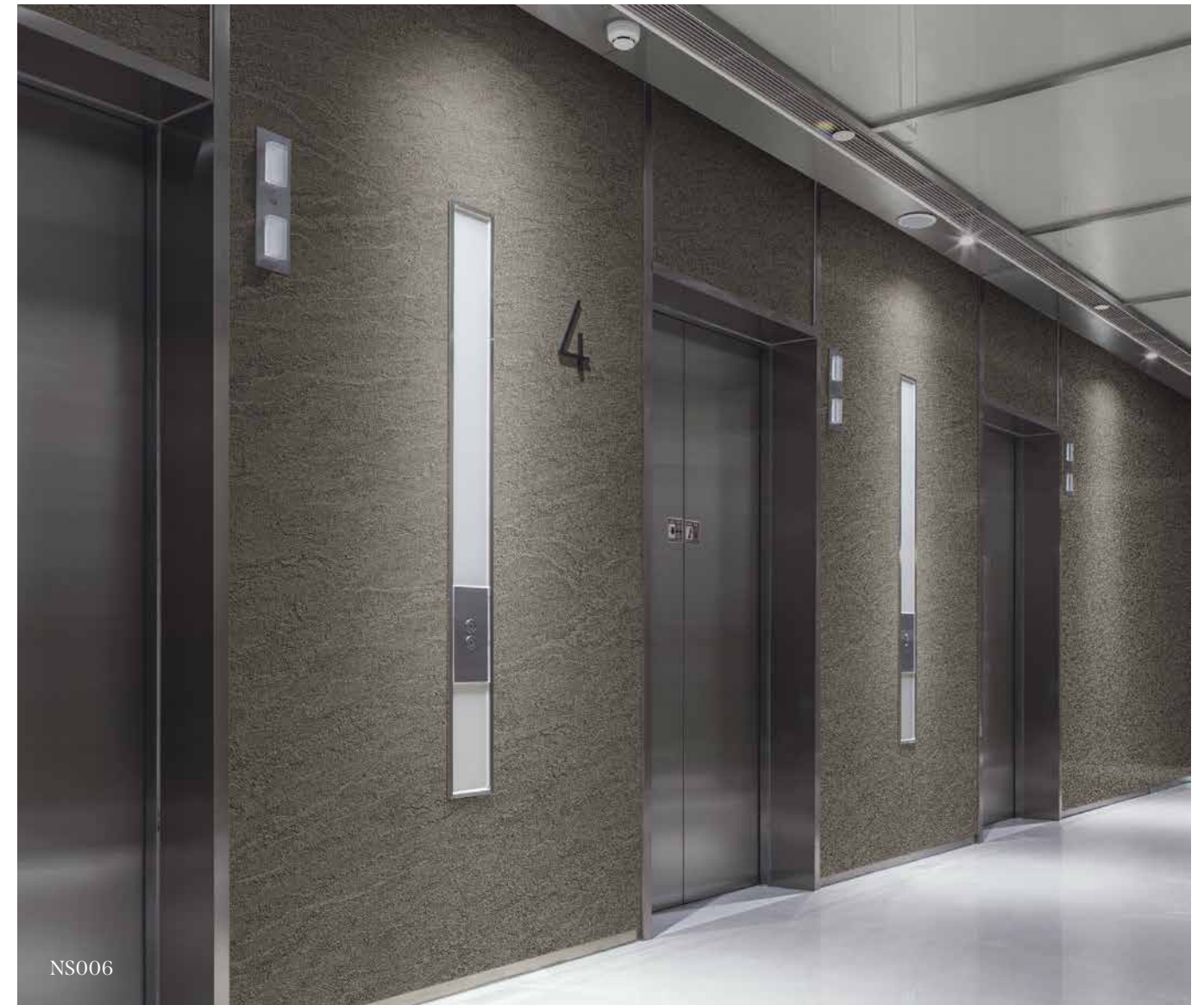


BM012 Bulky Concrete

※ 상기 이미지 안의 제품 패턴과 색상은 실제 제품과 차이가 있을 수 있음을 알려드립니다.

Stone 스톤

부드럽고 섬세한 컬러 위에 스톤의 느낌을 살린 터치감을 경험하세요.
Experience the touch feeling of stone on top of soft and detailed colors.



NS006



NS006



NS005

※ We notice that pattern and color of the product in the above image might differ from the actual product.

Stone 스톤



ML89



■ ML89



■ ML91



■ ML101



■ ML99



■ ML97



■ ML98

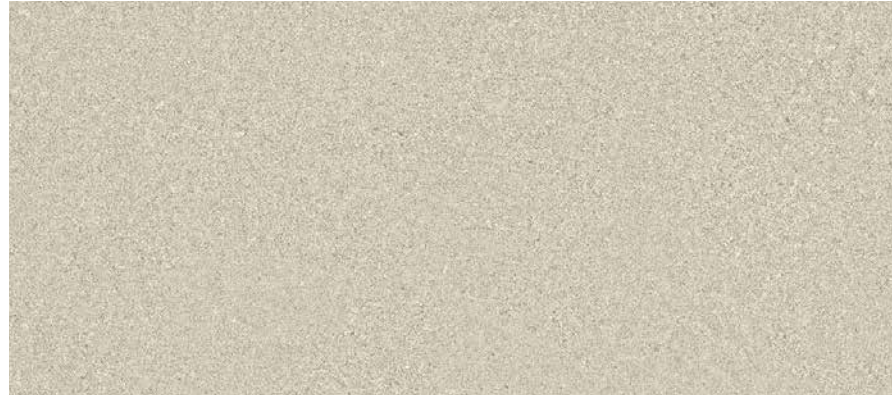


ML97

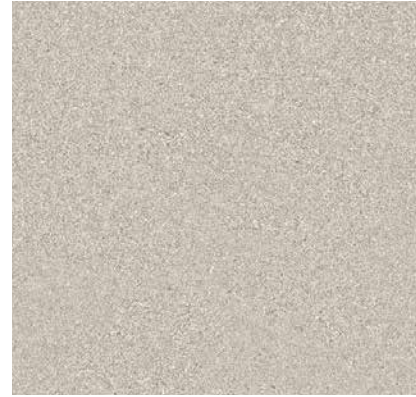
※ We notice that pattern and color of the product in the above image might differ from the actual product.

※ 상기 이미지 안의 제품 패턴과 색상은 실제 제품과 차이가 있을 수 있음을 알려드립니다.

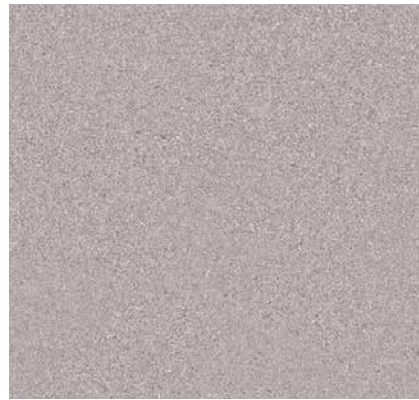
Stone 스톤



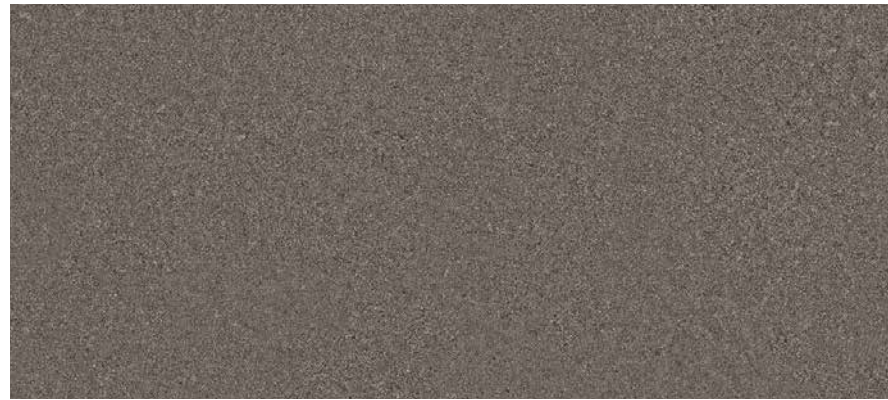
■ ML77



■ ML75



■ ML76



■ ML80



■ ML23



■ ML71



■ ML74



■ ML24



■ ML72



■ ML73

※ 상기 이미지 안의 제품 패턴과 색상은 실제 제품과 차이가 있을 수 있음을 알려드립니다.

Stucco 스타코

아트페인팅의 살아있는 터치감이 세련되고 고급스러운 분위기를 연출합니다.
The alive touch of art painting creates a refined and luxurious mood.



■ MLS05



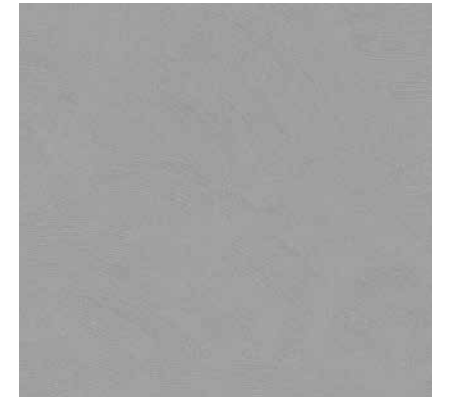
■ MLS02



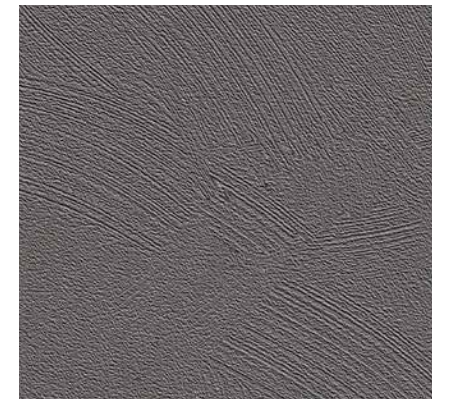
■ MLS03



■ MLS01



■ MLS06



■ MLS04

※ We notice that pattern and color of the product in the above image might differ from the actual product.

Concrete / Mortar 콘크리트 / 모르타르

가공되지 않은 거친 질감과 시크함으로 나만의 엔틱한 공간을 연출해 보세요.

Create your own antique space with unfashioned texture and chic.



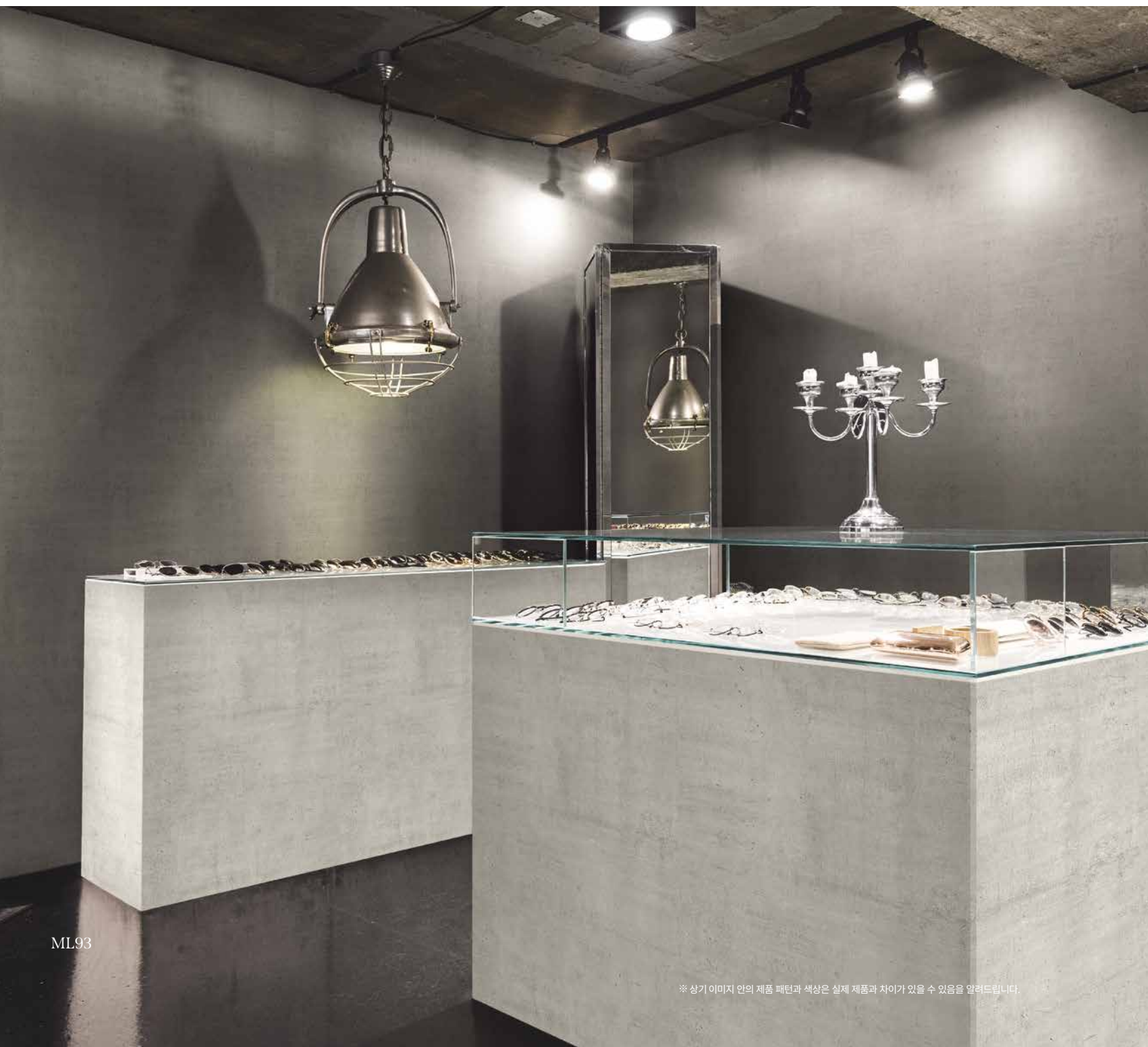
■ ML92



■ ML93



■ ML94



ML93

※ 상기 이미지 안의 제품 패턴과 색상은 실제 제품과 차이가 있을 수 있음을 알려드립니다.



ML22



■ ML64



■ ML22



■ EL178



■ EL177

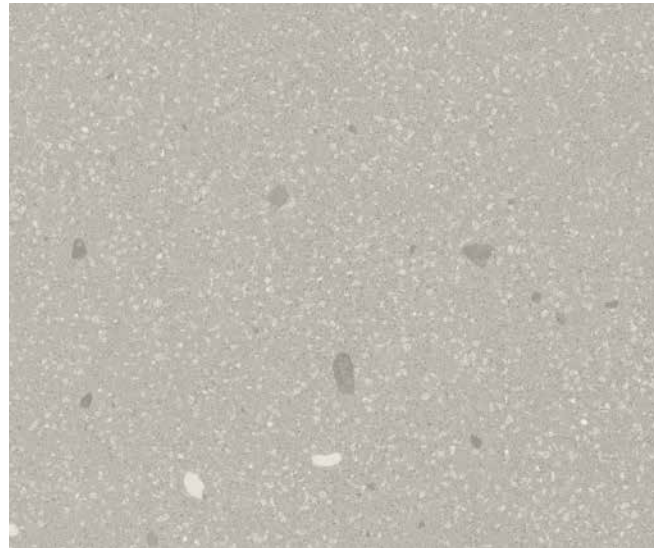


■ EL176

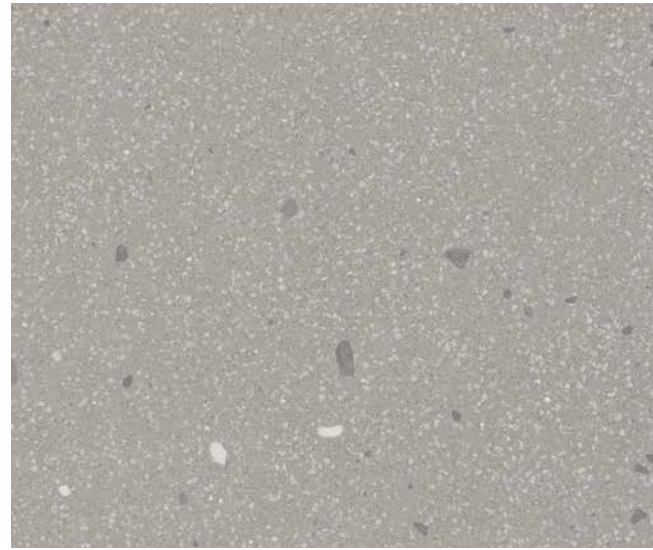
※ We notice that pattern and color of the product in the above image might differ from the actual product.

Marble 마블

고급스러운 유럽풍의 대리석이 선사하는 아름다움과 깨끗함을 느껴보세요.
 Feel the beauty and cleanliness of luxurious European-style marble.



■ ML96



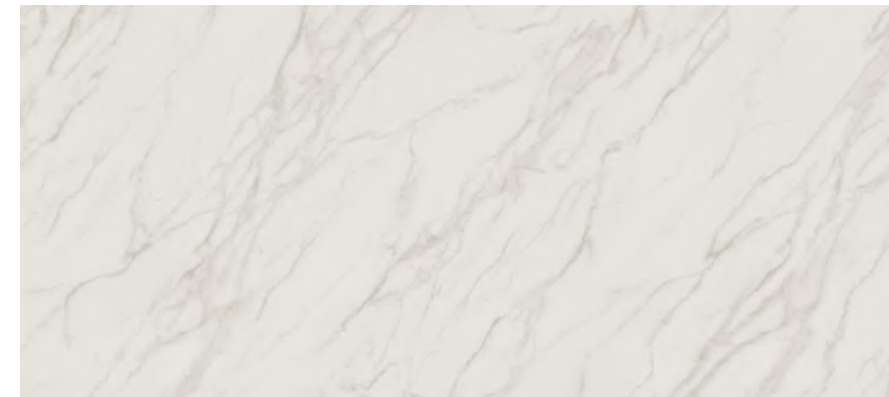
■ ML95



ML95



ML56



■ ML67



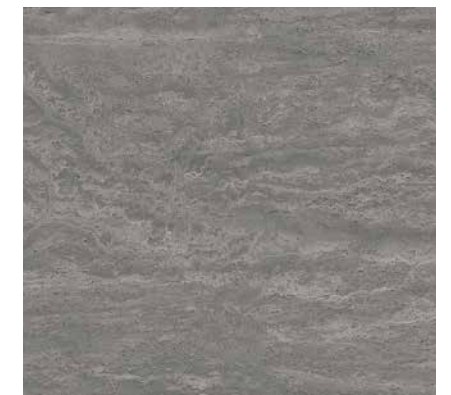
■ RM12



■ ML56



■ ML57



■ ML58

※ 상기 이미지 안의 제품 패턴과 색상은 실제 제품과 차이가 있을 수 있음을 알려드립니다.

※ We notice that pattern and color of the product in the above image might differ from the actual product.

Textile 텍스타일

다양한 색감이 깃든 섬세한 직물이 따뜻하고 포근한 공간을 안겨줍니다.
Detailed fabrics in various colors give a space warmly and snugly.



SF012 / SF014

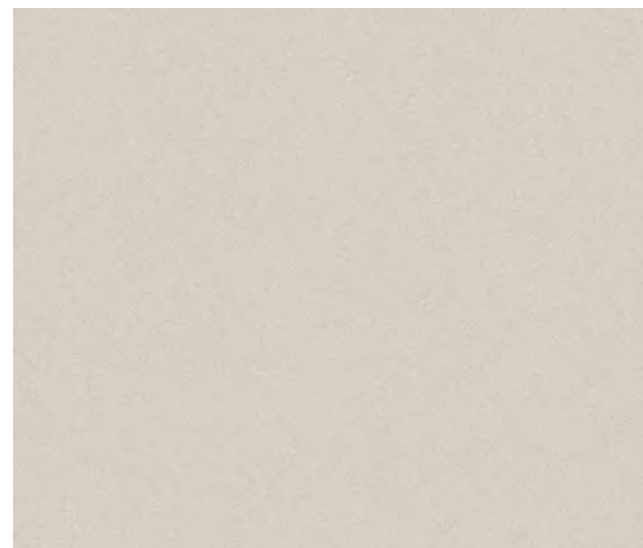
※ 상기 이미지 안의 제품 패턴과 색상은 실제 제품과 차이가 있을 수 있음을 알려드립니다.



■ SF011



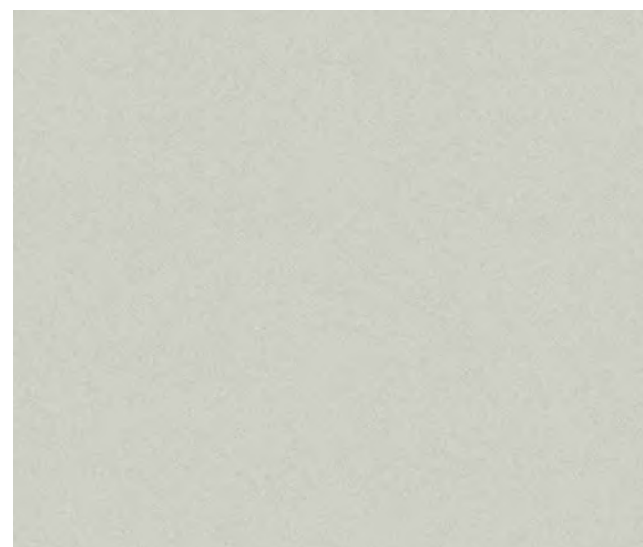
■ SF012



■ SF014



■ SF015



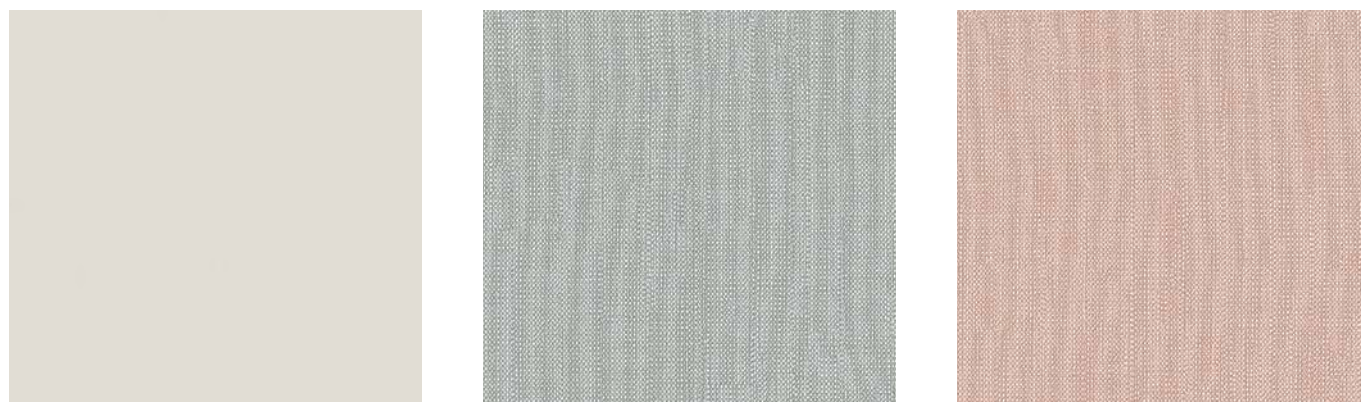
■ SF013



■ SF016

※ We notice that pattern and color of the product in the above image might differ from the actual product.

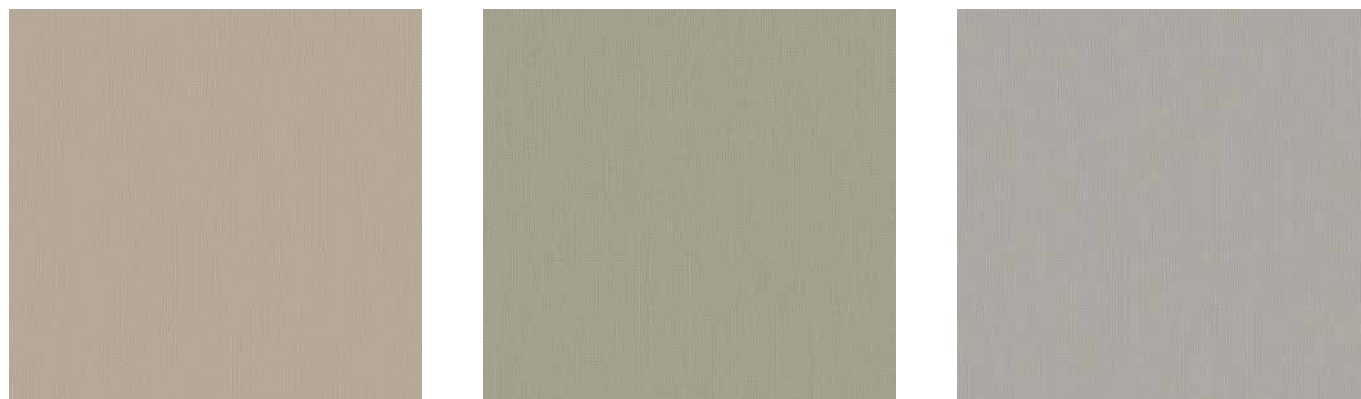
Textile 텍스타일



■ SF009

■ SF002

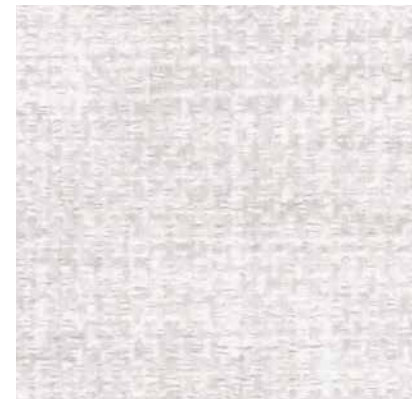
■ SF003



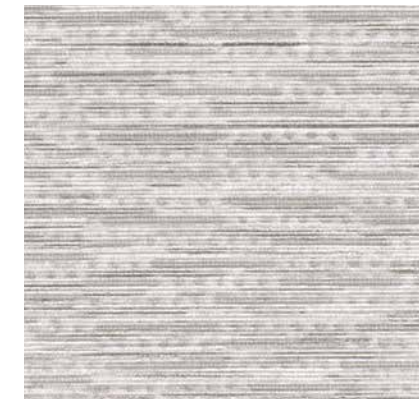
■ SF005

■ SF006

■ SF008



■ ML49



■ EL235



■ EL051



■ ML47



■ ML45



■ ML48



■ EL043



■ EL044



■ EL049



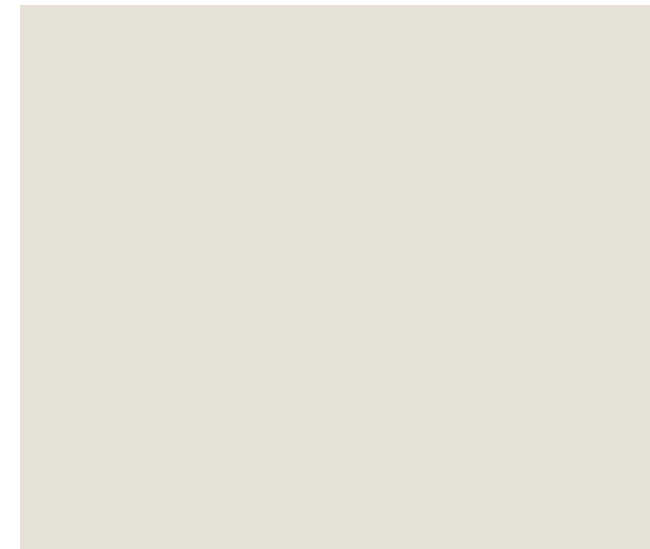
※ 상기 이미지 안의 제품 패턴과 색상은 실제 제품과 차이가 있을 수 있음을 알려드립니다.

※ We notice that pattern and color of the product in the above image might differ from the actual product.

Leather 레더

가죽만이 지닌 클래식하면서도 고급스러운 색상, 리얼한 터치감은 럭셔리 그 자체입니다.

The classic and luxurious colors and the realistic touch of leather are luxury itself.



■ ML83



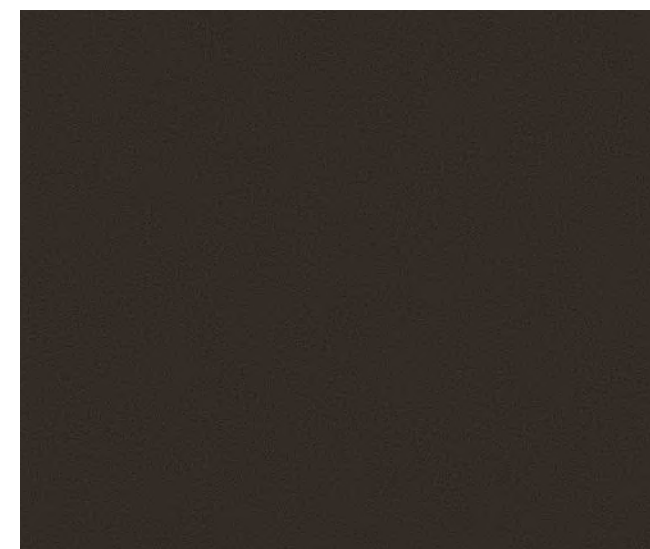
■ ML84



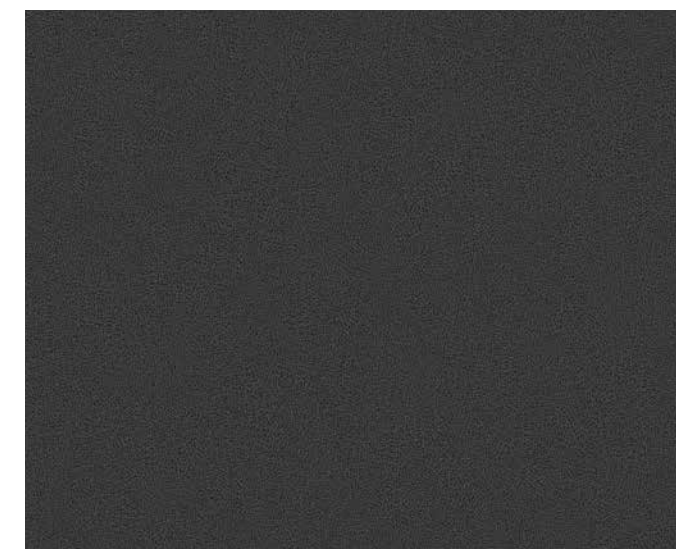
■ ML86



■ ML85



■ ML87



■ ML88

※ 상기 이미지 안의 제품 패턴과 색상은 실제 제품과 차이가 있을 수 있음을 알려드립니다.

※ We notice that pattern and color of the product in the above image might differ from the actual product.

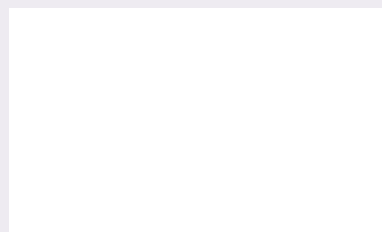
Specialty

Interior Film for railroad application

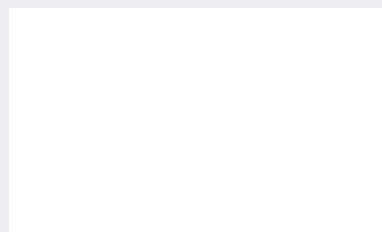
We offer Interior film specialized for railroad application meeting the technical standards of the Korean Ministry of Land, Infrastructure and Transport, and it is applied to KTX and SRT.

Inside Panel Fire Safety Standards						
Fire Performance Requirements	Test Method	Test Unit	Passing Criteria			
	Test Standard		HL1	HL2	HL3	HL4
Inside Panel	ISO 5660-1	MARHE(kW/m ² , @50kW/m ²)	-	≤ 90	≤ 90	≤ 60
	ISO 5658-2	Qasb(MJ/m ²)	≥ 1.2	≥ 1.2	≥ 1.5	≥ 1.5
	ISO 5658-2	CFE(kW/m ²)	≥ 15	≥ 18	≥ 20	≥ 20
	ASTM E 662	DS(1.5min)	≤ 150	≤ 100	≤ 75	≤ 50
	ASTM E 662	DS(4.0min)	≤ 300	≤ 200	≤ 150	≤ 100
	ASTM E 662	DS(10min)	-	-	≤ 300	≤ 200
	BS 6853 Annex B.2	Toxic index(R)	≤ 3.6	≤ 2.7	≤ 1.6	≤ 1.6

HL4 is the highest Hazard level in the Fire Performance for Inside panel



DFS03



DFP04

Specialized Flame retardant Interior Film

Japanese Non-Flammable Test

LX Hausys offers interior film certified for non-flammable and eco-friendly (F☆☆☆☆) of Japanese Ministry of Land, Infrastructure, Transport and Tourism.

Japanese non-flammable Certification (limited patterns only)



Interior film on non-combustible materials (gypsum board)



Interior film on aluminum materials



Interior film on steel materials



Chinese Flame Resistance

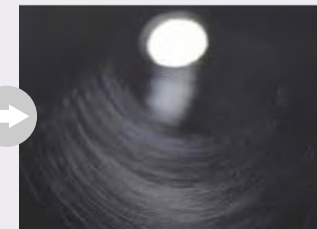
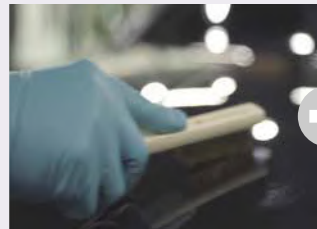
LX Hausys Interior Film has the non-combustible rating(A2) according to Article 9 of the Fire Control Law of the People's Republic of China.

Chinese non-combustible rating (A2) Report (limited patterns only)

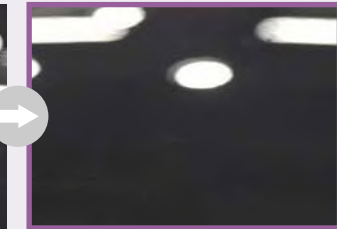
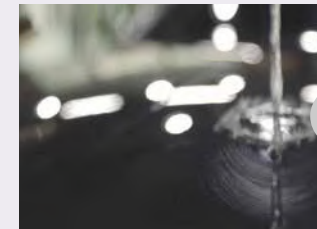


Self-healing Interior Film

LX Hausys Self-healing Interior Film can be self-repaired by applying hot water (80°C↑) or hot air to everyday scratches.



Scratch the film



Self-repaired with hot water

※ Test method: Scratches are generated on the surface using a *Wire Brush (15mm/min, 5 reciprocations), and residual scratches are measured after pouring hot water (80°C or above) and removing moisture.

※ This is based on our own test results, and actual results may vary depending on the usage environment or test conditions.

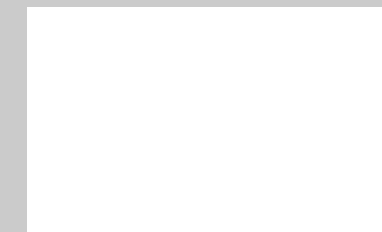
* Wire Brush

Model No.	Brass brush 4 lows
Wire diameter x hair length	φ0.14 x 16mm

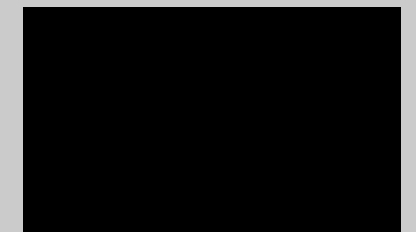
Experience it for yourself

Create scratches on the sample surface, and remove them by wiping with hot water.

※ Caution: Excessive exposure to heat may cause permanent damage due to film deformation. (Optimal surface temperature: 80 ~ 120°C)



White



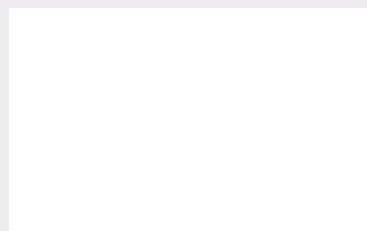
Black

※ There is a minimum order quantity for this product. If you wish to make a purchase, please inquire at your nearest vendor.

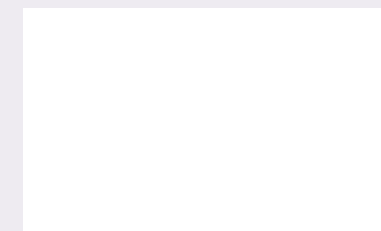
Window Film

This is a decorative film for windows that can be used in various places such as commercial, residential areas, and offices.

Windeco(PVC) _ EP115, LC5510



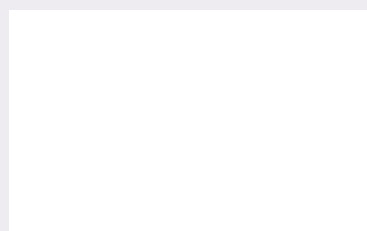
EP115



LC5510



Windeco(PET)_LC5601



LC5601



※ If you wish to make a purchase, please inquire at your nearest vendor.



Certification & Test Report

Fire Safety



LX Hausys Interior film BENIF's fire safety is recognized by earning the global fire certifications

Interior space



KFI Certification

It is Korean Flame Retardant Certificate. LX Hausys uses fire retardants approved by Korea Fire Institute, and only products have passed the flame retardant test can be released to the market. (Certificates are issued for products that pass the test)



CE Certification

It is the stability verification standard of European Union(EU). The product's stability within the European market has been substantiated by passing not only the flame spread rate test but also formaldehyde and heavy metal tests.

(Certification Number 1121-CPR-KA5008, limited to flame retardancy product)



UL flammability and smoke diffusion test (UL723) examination

Our products have passed the flammability and smoke diffusion test (UL723) conducted by the global safety certification organization UL (Underwriters Laboratories).

(Test report number R26170)

Eco-Friendly



LX Hausys is constantly striving to minimize substances harmful to the human body and the environment, considering the safety and environment of customers and builders.

Human-friendliness



Eco-Friendly construction materials certification

We have obtained the highest level in the verification of harmful substances in building materials in accordance with the Healthy Building Material Certification (HB Mark) established by the Korea Air Cleaning Association. However, please note that the safety of these materials in contact with food has not been verified. Also, there are some colors that have not been certified, so please check the certification document for more information.

(Group Standard Certification No. HB2679G22-01)



The European textile product quality certification

This certification verifies the absence of approximately 200 harmful substances in products that come into contact with skin, such as general products, bedding, toys, and interior materials.

BENIF's **Solid colors** were the first in the industry to obtain a 1st class certification (Baby Class) under this standard, which confirms their suitability for use in clothing and toys for infants and toddlers under 3 years of age. (Certification No. SE025 164519 TESTEX)

Environment-friendliness



Environmental Product Declaration (EPD)

It is a system that evaluates the environmental impact of the entire process, including raw materials, production, distribution, use, and disposal of certified products, and encourages environmental improvements. BENIF **Wood (CW, DW, FW, SW)** has obtained this certification and is continuously striving for environmental improvement. (Environmental Product Certification No. 2020-483)



Low Carbon Product Certification

If the carbon footprint value is equal to or less than the maximum allowable carbon emissions (average carbon emissions of environmentally friendly labeled products of the same type), or if the minimum carbon reduction rate is achieved, it is certified by the Korea Environmental Industry & Technology Institute. BENIF **Solid (RS, RGM)** has obtained this certification and is widely used as an environmentally friendly product. (Environmental Product Certification No. 2019-030)



Installation Instructions

1. Preliminary Work

- It is necessary to check the type and condition of the adherend(MDF, etc.) on which the film is applied to see if any problems may occur during installation.
 - In the case of MDF, it is recommended to use MDF with uniform density, as the difference in installation adhesion and flame retardant performance occurs depending on the density.
 - The painted surface should be cleaned with alcohol to remove contaminants and checked for damage by the solvent. The uneven areas should be polished with sandpaper after putting treatment and foreign matters should be removed with a dust brush.
 - For iron plates, after removing contaminants from the surface with alcohol or lacquer, the uneven areas caused by welding should be treated by puttying. Foreign matters should be removed with a dust brush after polishing the surface with sandpaper.
- It is necessary to perform preliminary inspection on whether the product selected by the consumer has defects. (pattern name, appearance, etc.)
- Film installation should be carried out after carpentry work and before painting and wallpapering.

2. Surface Pre-work

- The cross-section(cutting) part of the adherend(MDF, etc.) where the film will be applied must be sufficiently polished with sandpaper.
- In particular, in the case of wood(MDF, PB, etc.), smoothness of the bent and joint parts is important. Therefore, if the surface condition is rough after inspecting in advance, it must be sufficiently polished with sandpaper or putty treatment before installation.

3. Primer Treatment (PM-04)

- When applying the film, LX Hausys proprietary water-based primer (PM-04) must be used.
- For the primer treatment, the cut surface of wood(MDF, PB, etc.) among the adherends has a high primer absorption rate, so the primer should be applied 2-3 times. Overlapping is done after the primer applied before has been completely dried.
- Please take note of the recommended dilution ratio and drying time for Primer as provided below.

Ratio of mixing water and water-based primer	Time	Month	Primer	Water	Drying time (recommended)
	Winter season	December - March	1	1	24
Spring and Autumn season	April - May, October- November	1	1.5	12	
Summer season	June - September	1	2	8	

4. Installation Methods

- Film installation must be carried out in accordance with the installation guidelines in the specification sheet, and for further details, please refer to the installation manual.(service.lxhausys.co.kr - reference)
- During installation, the cut surface of the film should not be visible as much as possible.
- Film should be applied in a way that the substrate is not visible as much as possible.
- Color differences may occur between product lots, so it is necessary to sort the lots for installation.
- The site temperature should be maintained at 15~25°C from 72 hours before installation to 48 hours after installation. In winter, if the product is left outside, adhesion may decrease due to a drop in temperature.

5. Installation Instructions for Specific Products

- | | |
|-------------------|--|
| SW, EL | <ul style="list-style-type: none"> These products do not have a surface film layer but only do surface treatment. If you strongly rub the corners with wool felt or cotton gloves, the printed layer may be damaged, so please use our product carefully. Due to the surface treatment layer, it may slip when film is overlapped. Therefore, the installation should be done after applying the water-based primer PM-04 undiluted solution and drying it sufficiently. |
| PME | <ul style="list-style-type: none"> When applying the film to a surface with foreign substances or contaminants, those substances may protrude from the surface and negatively affect the film's adhesion. Therefore, it is essential to thoroughly clean the surrounding environment and perform sanding work on the adhesive surface to ensure optimal adhesion. |
| PW, SF, NS | <ul style="list-style-type: none"> When installing products that are thicker and have a different depth or shape of embossing than regular products, it is necessary to apply sufficient pressure to attach the product to the surface after primer treatment. Also, it is important to apply more force to the folding and overlapping areas to prevent any lifting. |

6. Other Precautions

- Film installation must be carried out according to the installation standards of the specification.
- For installation methods and adherends(MDF, etc.), in case of the installation on a different type of adherend from the specifications, you must contact LX Hausys or a vendor to confirm the possibility of installation.
 - Air bubbles may occur during installation on acrylic adherends, so please check with LX Hausys or a vendor before installation.
- The shelf life of LX Hausys Interior Film is valid for two years from the date of factory production. Please store the product in a place without high temperature and humidity and avoid direct sunlight. The ideal conditions for storage are 20°C temperature and 50% humidity.
- When moving or transporting the product, please avoid dropping it as the product may break due to impact (especially during the winter season).
- Please be advised that release paper may undergo contraction or expansion during processing and storage due to the impact of heat and moisture. Consequently, we recommend utilizing release paper measurements as a point of reference, and when cutting, we suggest providing extra margin beyond the actual dimensions of the adhering surface.
- For products with deep embossing, special attention should be paid during installation to ensure sufficient adhesion through stronger pressure, as the area of adhesive installation on overlapping parts may be reduced.