

TEST REPORT

KOTITI No. | 8220-1401-104728

Applicant | LG Hausys

Date In | 2020. 07. 24.

Date Out | 2020. 08. 05.

Sample Description	LG Hausys Interior Film (CW)
Sample Quantity	One (1) Sample(s)
Buyer	N/S
Item Number	N/S
Material	PVC
Testing Period	2020. 07. 24. ~ 2020. 08. 05.
Test Result	For further details, please refer to the following page(s).

* N/S : Not Submitted, N.A. : Not Applicable, N.D. : Not Detected [< RL(Report Limit)]

* Negative : Not Detected, Positive : Detected

Affirmation	Prepared by	Technical Manager
	Name : Ki woong Oh 	Name : Hae sung Kim 

KOTITI Testing & Research Institute



Contact Information for technical questions and general inquiries.

·Primary Contact: Yun jae Lee T (822)3451-7116 E yjlee@kr.kotiti-global.com ·Back-up : Jung hyun Lee T (822)3451-7113 E jhlee@kr.kotiti-global.com

111, Sagimakgol-ro, Jungwon-gu, Seongnam-si, Gyeonggi-do, Korea T (822)3451-7183 F (822)3451-7179 W www.kotiti-global.com

1. The test results contained in this report are limited to results on the sample(s) that is provided by client and are not necessarily indicative or representative of the qualities of the lot from which the sample(s) was taken or of all products.
2. Further use of the results of this report is prohibited unless allowed under a separate agreement set forth in an official document that is established between the client identified on this letter and the KOTITI Testing & Research Institute.
3. The test result in this report is not related to accreditation of KOLAS.
4. You can verify the authenticity by the QR code at the bottom right side of the issued report, or access <http://cs.kotiti-global.com> and enter the test report number.

QPF-16-06(rev.00)



KOTITI

KOTITI Testing & Research Institute

Tested Sample List			
Sample No.	Sample Description	Item No.	Material
1	LG Hausys Interior Film (CW)	N/S	PVC

RoHS, Unit: mg/kg
(EU Directive 2011/65/EU, 2015/863/EU)

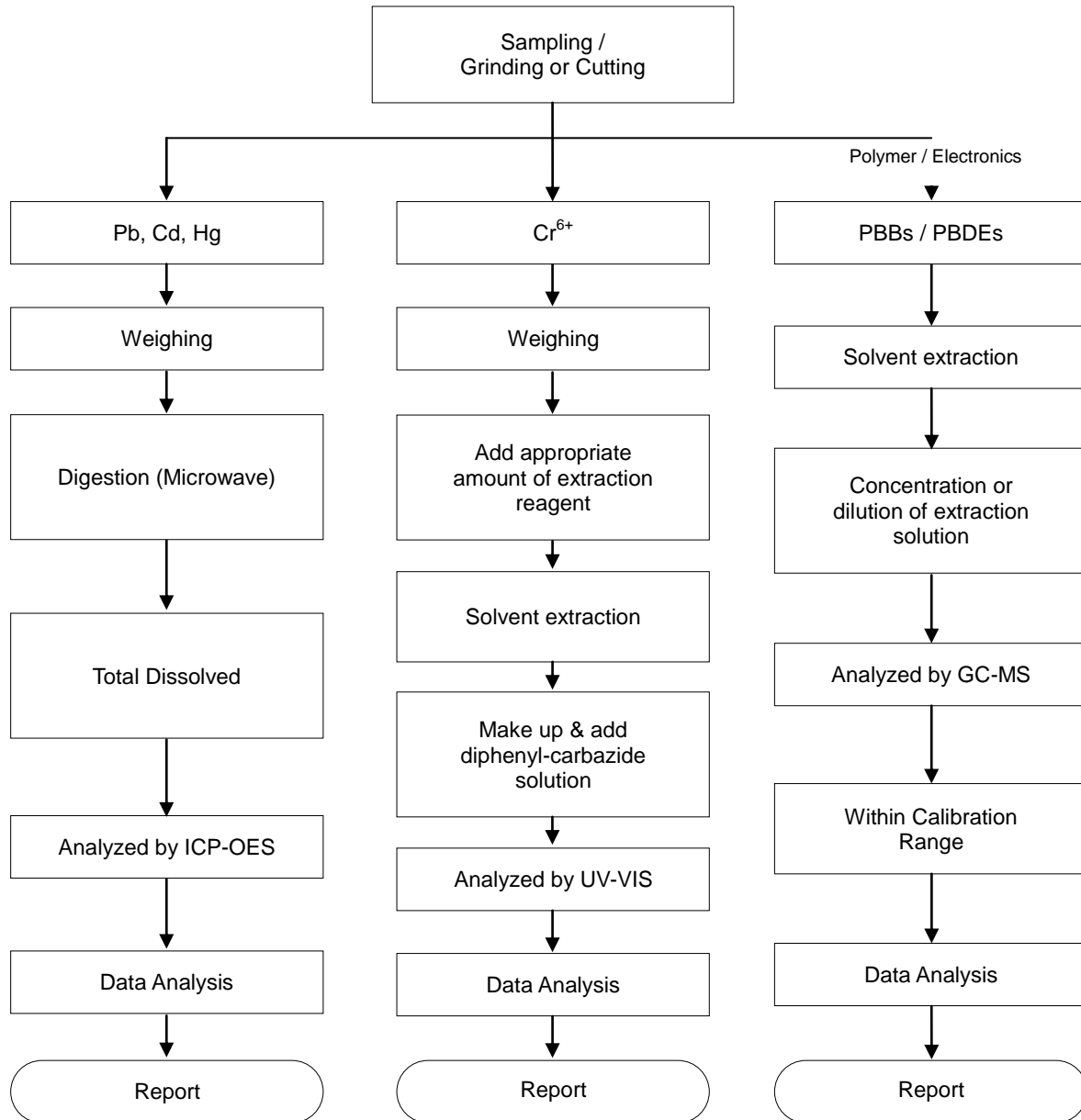
Test Conducted	Test Method	RL	Test Results
1			
Lead (Pb)	IEC 62321-5:2013 (Acid digestion and determined by ICP-OES)	5	N.D.
Cadmium (Cd)		2	N.D.
Mercury (Hg)	IEC 62321-4:2013 (Acid digestion and determined by ICP-OES)	1	N.D.
Hexavalent Chromium (Cr ⁶⁺)	IEC 62321-7-2:2017 (Solvent extraction and determined by UV-VIS)	8	N.D.
* Polybrominated Biphenyls(PBBs)			
Bromobiphenyl	IEC 62321-6:2015 (Solvent extraction and determined by GC-MS)	5	N.D.
Dibromobiphenyl		5	N.D.
Tribromobiphenyl		5	N.D.
Tetrabromobiphenyl		5	N.D.
Pentabromobiphenyl		5	N.D.
Hexabromobiphenyl		5	N.D.
Heptabromobiphenyl		5	N.D.
Octabromobiphenyl		5	N.D.
Nonabromobiphenyl		5	N.D.
Decabromobiphenyl		5	N.D.
Sum of PBBs		-	N.D.
* Polybrominated Diphenyl Ethers(PBDEs)			
Bromodiphenyl ethers	IEC 62321-6:2015 (Solvent extraction and determined by GC-MS)	5	N.D.
Dibromodiphenyl ethers		5	N.D.
Tribromodiphenyl ethers		5	N.D.
Tetrabromodiphenyl ethers		5	N.D.
Pentabromodiphenyl ethers		5	N.D.
Hexabromodiphenyl ethers		5	N.D.
Heptabromodiphenyl ethers		5	N.D.
Octabromodiphenyl ethers		5	N.D.
Nonabromodiphenyl ethers		5	N.D.
Decabromodiphenyl ether		5	N.D.
Sum of PBDEs		-	N.D.

Photo of the submitted sample(s)



Flow Chart

RoHS



Material	Digestion Acid
Polymers	HNO ₃ , HCl, HF, H ₂ O ₂ , H ₂ SO ₄ , etc.
Metals	HNO ₃ , HCl
Electronics	HNO ₃ , HCl, HF, H ₂ O ₂ , H ₂ SO ₄ , etc.